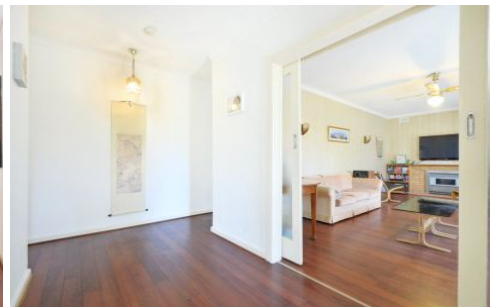
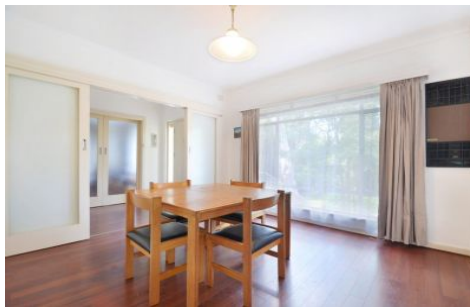


# MAGAIN



**16 Hawthorndene Drive HAWTHORNDENE SA**

**3** **2** **1**

Please contact Josh Morrison for viewing times.

Located in a picturesque location at the base of the Adelaide Hills this home is a must see, most of the hard work has been done for you, but the possibilities are endless, it's ready to make your own.

When you enter the home you immediately notice it flows nicely with specious living areas on both sides of the entrance and dark floating floors throughout. There are three bedrooms all with ceiling fans, the master with walk in robe and completely modernised en suite. The updated family bathroom with a separate shower and bath has the added bonus of a heated floor and a solar hot water system. For all round comfort there is reverse cycle air conditioning in the master and dining and oil heater in the lounge.

[For full version visit the website](https://www.magain.com.au/property/16-hawthorndene-drive-hawthorndene-sa/8425824)

**Type** : House  
**Building Size** : 16 sqm  
**Land Size** : 843 sqm  
**View** : <https://www.magain.com.au/property/16-hawthorndene-drive-hawthorndene-sa/8425824>

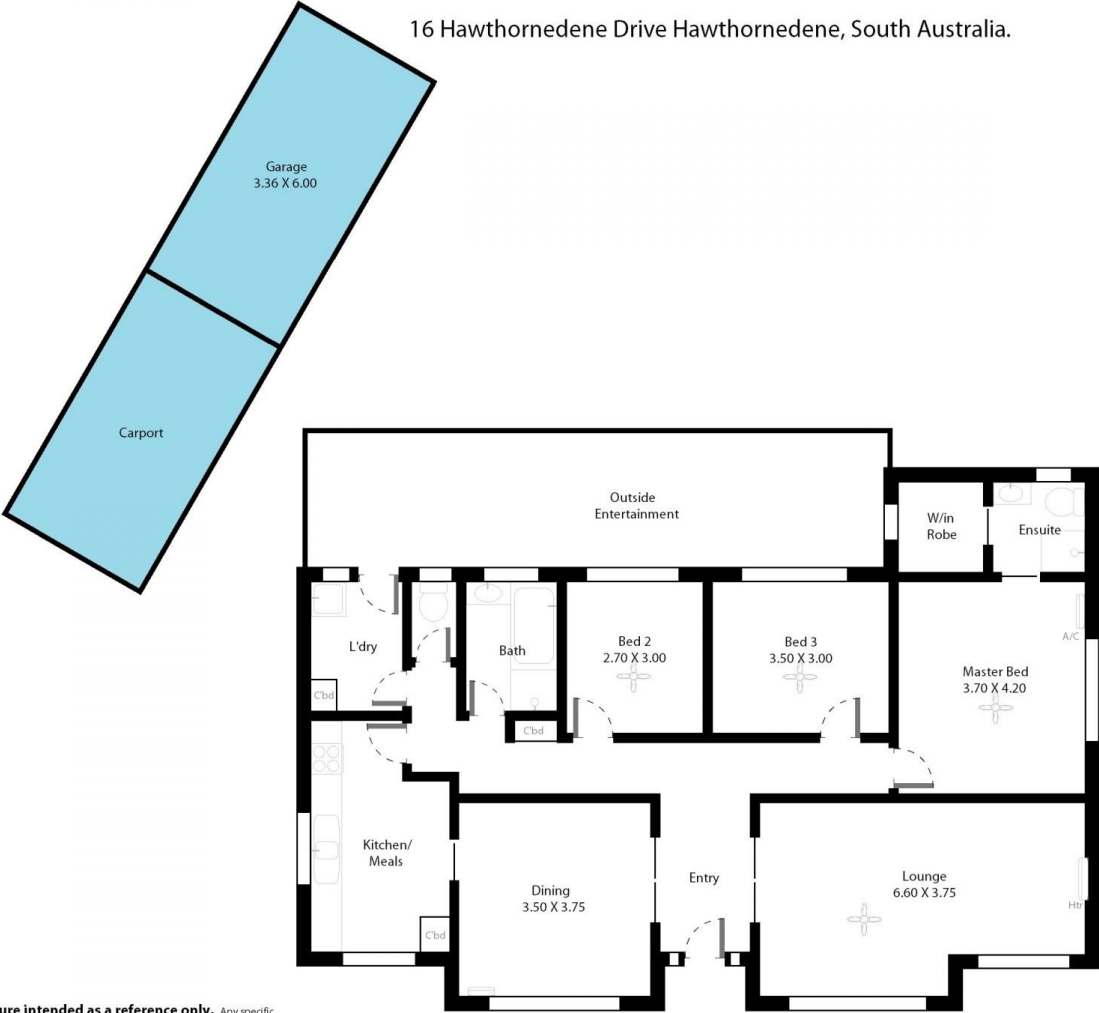


**Josh Morrison**  
**08 8294 4111**

<https://www.magain.com.au>  
Magain Real Estate

74 Brighton Road Glenelg East SA  
08 8294 4111

16 Hawthornedene Drive Hawthornedene, South Australia.



Picture intended as a reference only. Any specific measurements required should be obtained by an independent surveyor.