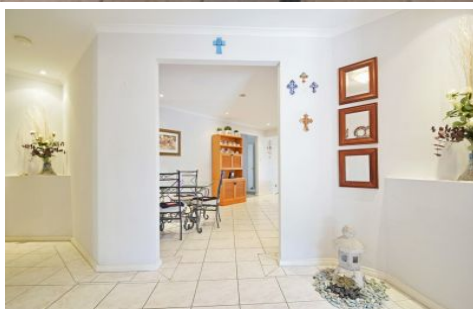


MAGAIN



53 Berrima Road SHEIDOW PARK SA

4  2  2 

Call Craig Thomson for viewing times.

Situated in the heart of the sought after and fast moving suburb of Sheidow Park, this home is an ideal upsize opportunity perfect for the growing family. Featuring 4 bedrooms, master complete with ensuite and walk in robe, 2 living areas and a fantastic outdoor entertaining area perfect for summer BBQ's.

The functional and spacious floor plan with central kitchen offers you lifestyle of envy amongst your friends and the home itself contains air-conditioning and wall mounted gas heater so it has you covered in comfort all year round.

The quality of the outdoor pitched pergola is immediately noticed which gives you ample space to entertain, flowing directly into the large open plan living/dining area ideal for those special occasions.

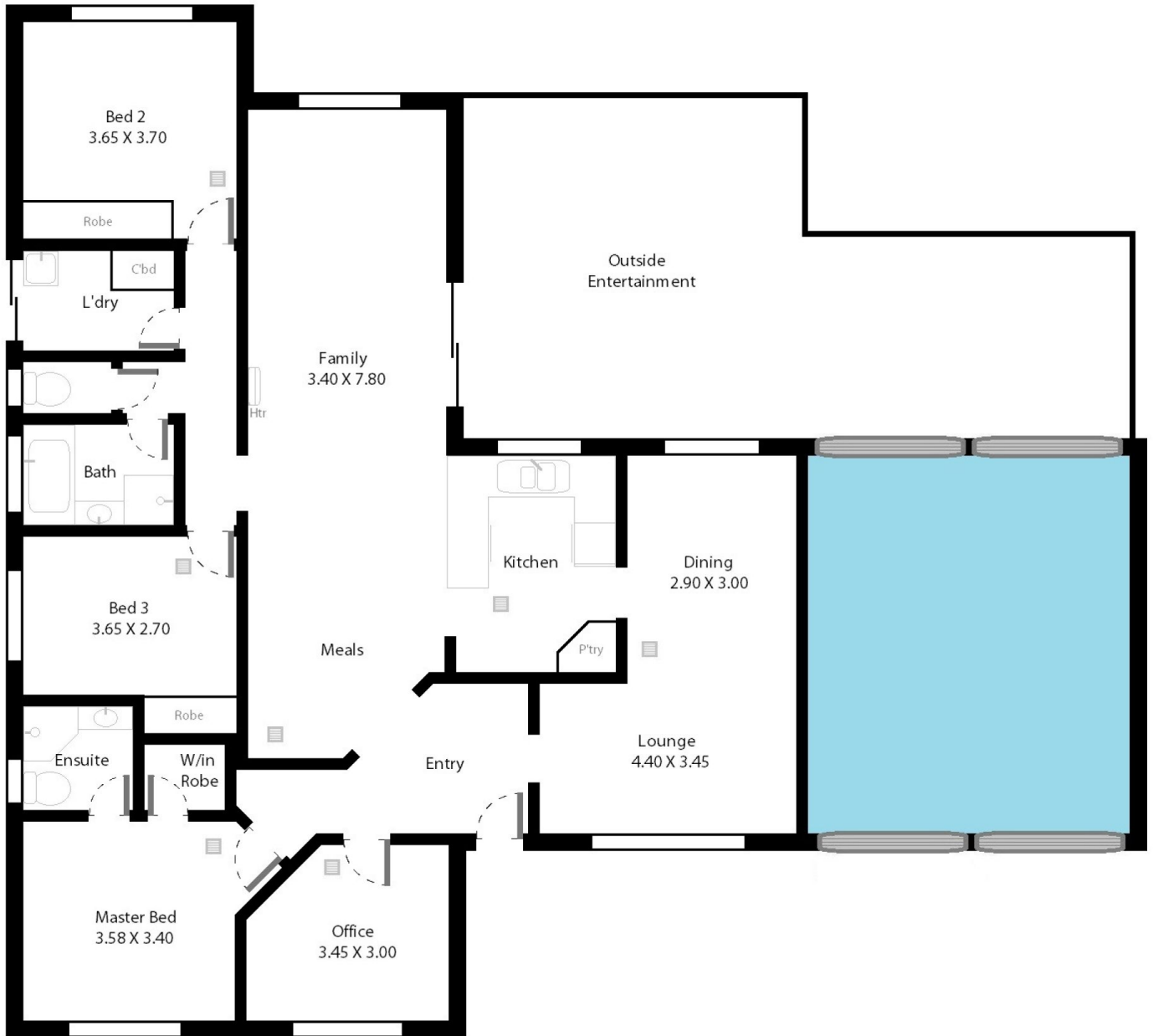
[For full version visit the website](https://www.magain.com.au/property/53-berrima-road-sheidow-park-sa/8425832)

Type : House
Building Size : 19 sqm
Land Size : 600 sqm
View : <https://www.magain.com.au/property/53-berrima-road-sheidow-park-sa/8425832>



Craig Thomson
08 8366 2292

53 Berrima Road Sheidow Park, South Australia.



Picture intended as a reference only. Any specific measurements required should be obtained by an independent surveyor.