

# MAGAIN



11/40 Byron Avenue CLOVELLY PARK SA

2 1 1

Contact Josh Morrison for viewing times.

This conveniently located home is a must see. Positioned quietly at the rear of the group and with a great outlook to greenery this home is ready to move in and enjoy.

Inside you are greeted with a spacious lounge which leads to the open plan dining and kitchen area. The home boasts two good size bedrooms that sit adjacent the family bathroom and separate toilet. For year round comfort the home is fitted with ducted reverse cycle air conditioning.

Outside offers a large space to entertain your family and friends year round under the pergola, a tool shed for storage and secure undercover parking for your car.

A sound buy for investors and owners alike, this one is also close to Park Holme and Marion shopping centres, Glenelg, Flinders University and Hospital, quality local

**Type** : Unit

**View** : <https://www.magain.com.au/property/1140-byron-avenue-clovelly-park-sa/8425860>



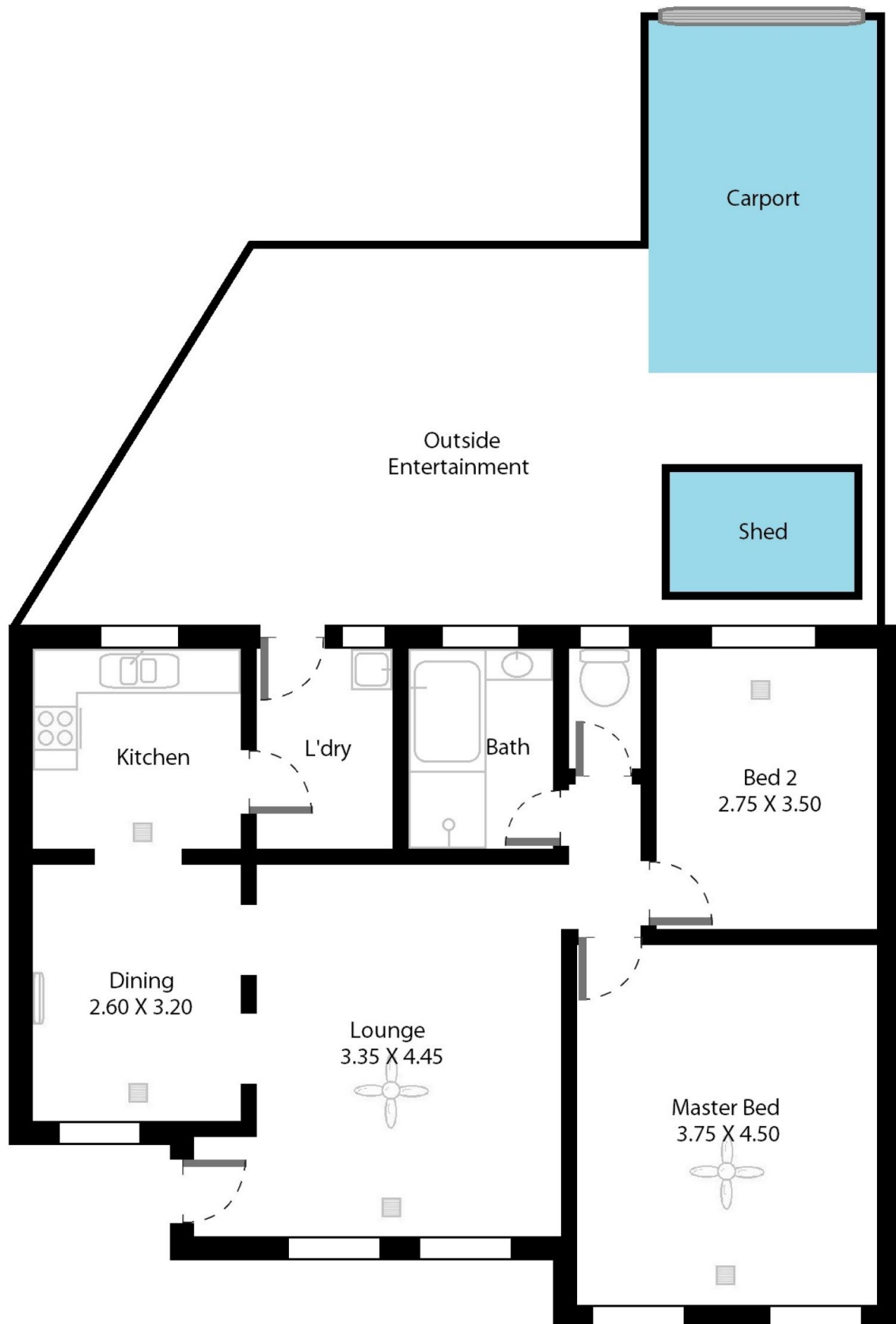
**Josh Morrison**  
08 8294 4111

[For full version visit the website](https://www.magain.com.au)

<https://www.magain.com.au>  
Magain Real Estate

74 Brighton Road Glenelg East SA  
08 8294 4111

Unit 11/40 Byron Avenue Clovelly Park, South Australia.



**Picture intended as a reference only.** Any specific measurements required should be obtained by an independent surveyor.