

MAGAIN



7 Shiraz Court Aberfoyle Park SA

5 2 2

Please contact Josh Morrison for all your property advice

If this is what they mean by "give me a home amongst the gum trees", then we're all for it! Sitting on an incredible allotment of 1224m² (approx.), this multi-level family home offers scenic views, excellent entertaining and has been stylishly updated with a very functional layout.

With an attractive street appeal, step inside to find multiple living spaces downstairs boasting plenty of natural light and high ceilings. Comforts are catered for with a gas heater and fireplace for those cooler nights, whilst you are spoilt for choice with evaporative cooling for those warm summer days. The open plan leads through to the sparkling

[For full version visit the website](https://www.magain.com.au/property/7-shiraz-court-aberfoyle-park-sa/8426273)

Type : House
Price : \$ 1,100,000
Building Size : 152 sqm
Land Size : 1224 sqm
View : <https://www.magain.com.au/property/7-shiraz-court-aberfoyle-park-sa/8426273>



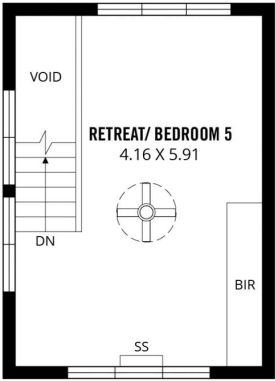
Josh Morrison
08 8294 4111



Steve Krause
08 8294 4111

<https://www.magain.com.au>
Magain Real Estate

74 Brighton Road Glenelg East SA
08 8294 4111



FIRST FLOOR



GROUND FLOOR



Scale in metres. This drawing is for illustration purposes only. All measurements are approximate and details intended to be relied upon should be independently verified.