

# MAGAIN



**2/10 Coralie Street Plympton SA**

**3** **2** **2**

Please contact Emma Bedford from Magain Real Estate for all your property advice.

Positioned in the ever-popular suburb of Plympton, this brand new three-bedroom townhouse is a shining example of modern design, easy living, and unbeatable location. Whether you're a first home buyer, growing family, or savvy investor, this beautifully crafted property offers a perfect blend of style, space, and low-maintenance convenience.

The heart of the home is found on the first floor, where a light-filled open-plan living, dining, and kitchen area awaits. The designer kitchen features stone benchtops, stainless steel appliances including a gas cooktop, oven, and dishwasher, making meal prep and entertaining a breeze.

**Type** : House

**View** : <https://www.magain.com.au/property/210-coralie-street-plympton-sa/8426345>



**Emma Bedford**  
**08 8294 4111**

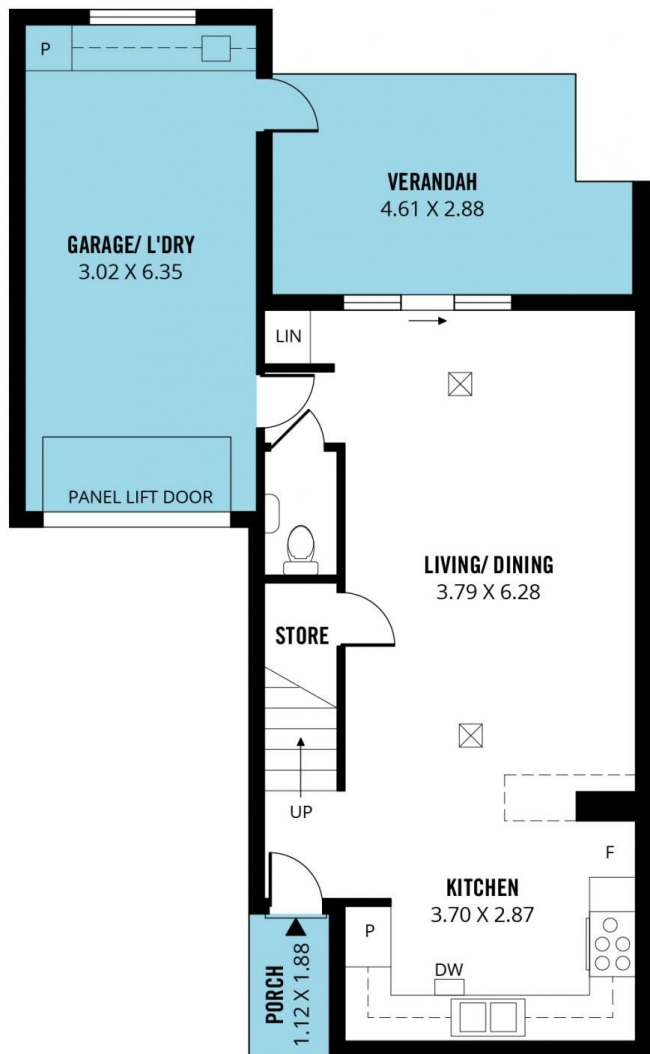


**Josh Morrison**  
**08 8294 4111**

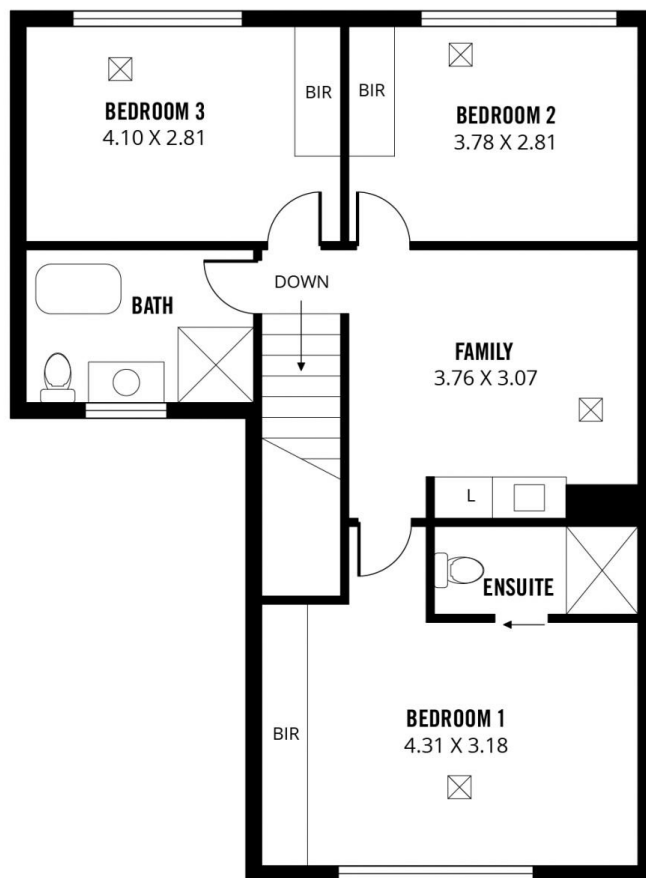
[For full version visit the website](https://www.magain.com.au)

<https://www.magain.com.au>  
Magain Real Estate

74 Brighton Road Glenelg East SA  
08 8294 4111



**GROUND FLOOR**



**FIRST FLOOR**



Scale in metres. This drawing is for illustration purposes only. All measurements are approximate and details intended to be relied upon should be independently verified.

Produced by **The Fotobase Group**