

MAGAIN



38 Gloucester Avenue Salisbury East SA

4 1 2

Please contact Bailey Fielke from Magain Real Estate for all your property advice.

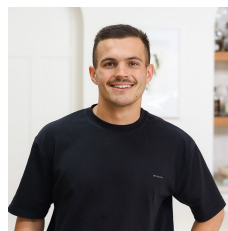
Welcome to 38 Gloucester Avenue, Salisbury East. Set back on an optimistic 670sqm allotment, this large home with a flexible floorplan presents great opportunities to an array of different buyers.

Located within stone's throw of local shops, Tyndale Christian School and public transport, the property is the definition of convenience. With its large three-to-four-bedroom floor plan, the home which has been recently recarpeted and repainted also includes multiple living areas, side access, a double garage and much more! The home includes:

? Three to four bedrooms

[For full version visit the website](https://www.magain.com.au/property/38-gloucester-avenue-salisbury-east-sa/8426374)

Type : House
Price : \$ 600,000
Building Size : 126 sqm
Land Size : 670 sqm
View : <https://www.magain.com.au/property/38-gloucester-avenue-salisbury-east-sa/8426374>



Bailey Fielke
08 8522 2745



Grant Fielke
08 8522 2745

<https://www.magain.com.au>
Magain Real Estate

Shop 1/1 Mitchell Street Hyde Park SA
08 8151 2356

38 Gloucester Avenue,
SALISBURY EAST



This drawing is for illustration purposes only. All measurements are internal and approximate.
Details intended to be relied upon should be independently verified.

