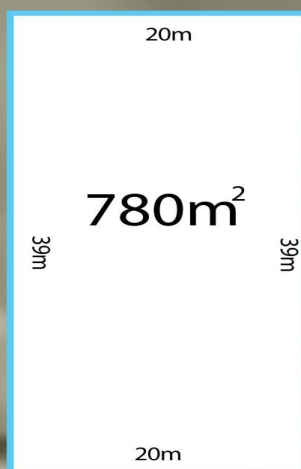


# MAGAIN

LAND  
ALIVE  
magain  
real estate



## LOT 45 SIR SIDNEY KIDMAN BOULEVARD

Scale in metres. This drawing is for illustration purposes only.  
All measurements are approximate and details intended to be relied upon should be independently verified.

### 45/ Sir Sidney Kidman Boulevard Kapunda SA

Please contact Bailey Fielke from Magain Real Estate for all your property advice.

Kidman Rise lies on the northern edge of Kapunda on paddocks where Sidney Kidman once rested horses before his world famous sales.

The land is near level; ideal for building. These large locks are orientated to allow the home to be sited to take advantage of northern sun for passive heating.

Kapunda is centrally placed to play a key role in the development of the Barossa and Clare Valley. Land for housing in both wine regions is at a premium and the population of their major towns is increasing. Both are looking to neighbouring towns to provide homes for their workforce.

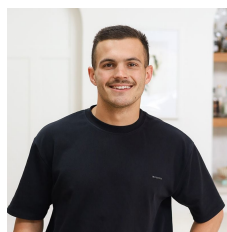
Disclaimer: All floor plans, photos and text are for illustration purposes only and are not intended to be part of any contract. All measurements are approximate and details intended to be relied upon should be independently verified.

RLA 222182

Magain Real Estate

[For full version visit the website](https://www.magain.com.au)

**Type** : Land  
**Price** : \$ 210,000  
**Land Size** : 780 sqm  
**View** : <https://www.magain.com.au/property/45-sir-sidney-kidman-boulevard-kapunda-sa/8426378>



**Bailey Fielke**  
08 8522 2715

<https://www.magain.com.au>  
Magain Real Estate

Shop 1/1 Mitchell Street Hyde Park SA  
08 8151 2356