

# MAGAIN



## 119 Homestead Drive Aberfoyle Park SA

4 2 4

For further information contact Keegan O'Malley from Magain Real Estate.

119 Homestead Drive, Aberfoyle Park - Sitting on top of the hill with fabulous views and a beautiful sense of space sits this fantastic family home. Boasting 4 bedrooms, master w/ en-suite + walk-in robe, a large kitchen, Formal lounge room with gas fire place, a comfortable sized second living area, formal dining room and much more.

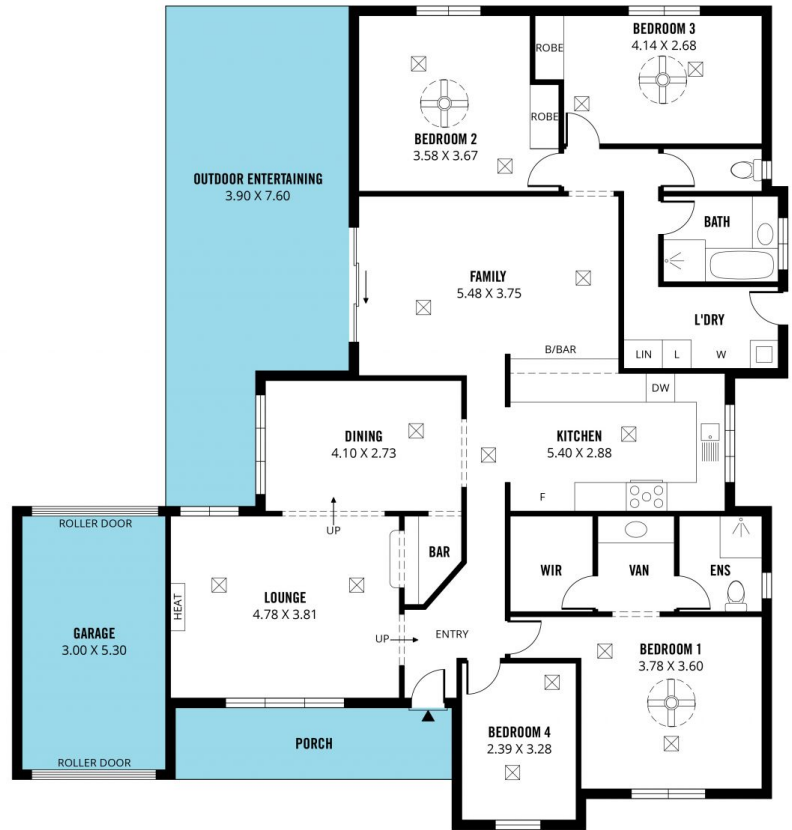
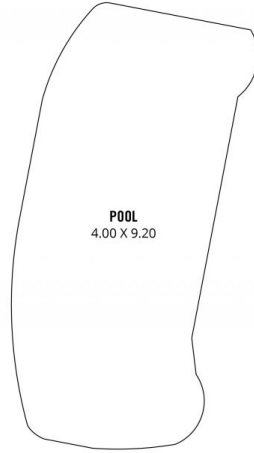
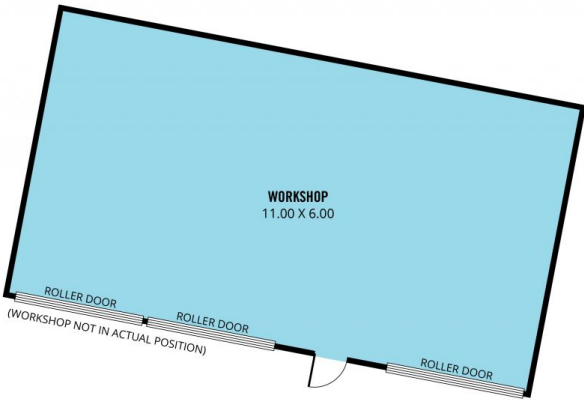
As you head outside into the large outdoor entertaining area, you uncover a fantastic landscape with beautiful views over the treetops. The grounds are easy maintenance & well cared for whilst maintaining functionality for a growing family. At the back of the

[For full version visit the website](#)

**Type** : House  
**Price** : \$ 785,000  
**Building Size** : 177 sqm  
**Land Size** : 1364 sqm  
**View** : <https://www.magain.com.au/property/119-homestead-drive-aberfoyle-park-sa/8426428>

<https://www.magain.com.au>  
Magain Real Estate

52 Hillier Road Morphett Vale SA  
08 8366 2292



Scale in metres. This drawing is for illustration purposes only. All measurements are approximate and details intended to be relied upon should be independently verified.

Produced by The Fotobase Group