




MAGAIN



20/9 Elmo Avenue Westbourne Park SA

2  1  1 

Please contact Craig Thomson on 0401 617 453 for more information.

Situated in the leafy green suburb of Westbourne Park this ground floor unit has plenty to offer.

This easy care unit provides two good sized bedrooms both with built in robes, an open living area with polished floorboards and a large window to allow natural light into the unit. All the bedrooms and living area has roller shutter blinds for added security too.

There is ample storage space in the kitchen with electric cooking.

Single carport & large communal lawn area.

Access to the recently renovated Swimming Pool - perfect

Type : Unit

Price : \$ 256,000

View : <https://www.magain.com.au/property/209-elmo-avenue-westbourne-park-sa/8426444>

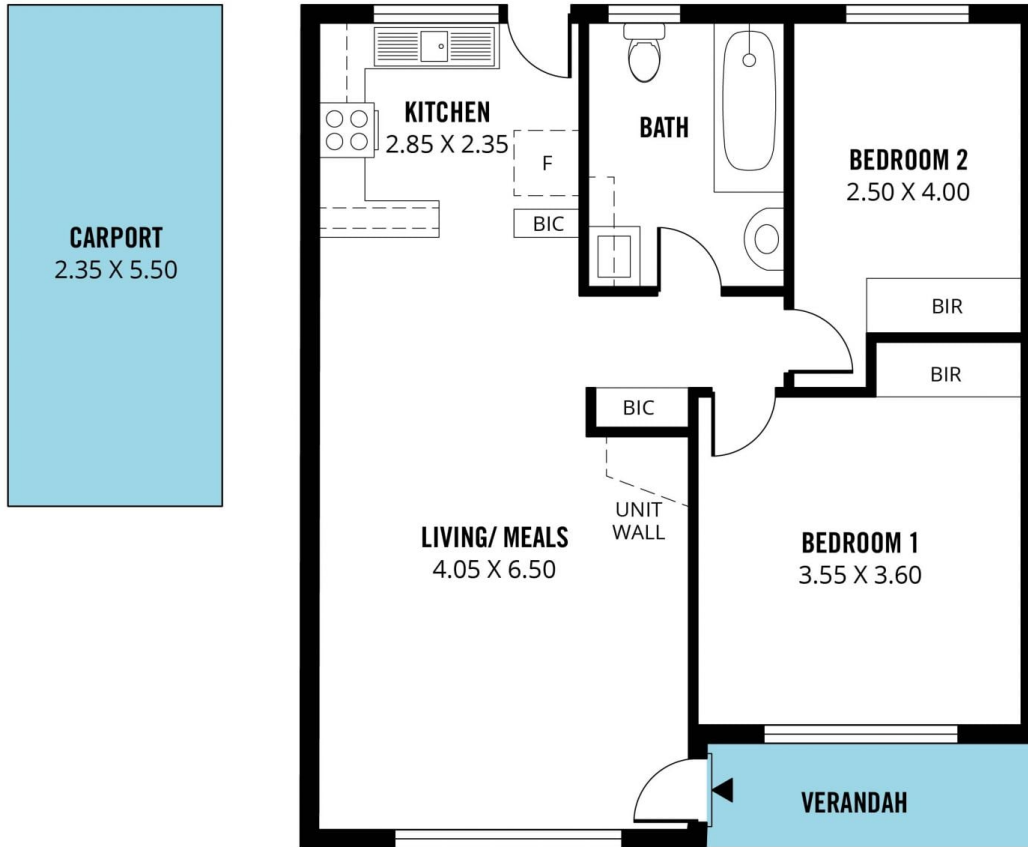


Craig Thomson
08 8366 2292

[For full version visit the website](https://www.magain.com.au)

<https://www.magain.com.au>
Magain Real Estate

52 Hillier Road Morphett Vale SA
08 8366 2292



Scale in metres. This drawing is for illustration purposes only. All measurements are approximate and details intended to be relied upon should be independently verified. Produced by **The Fotobase Group**