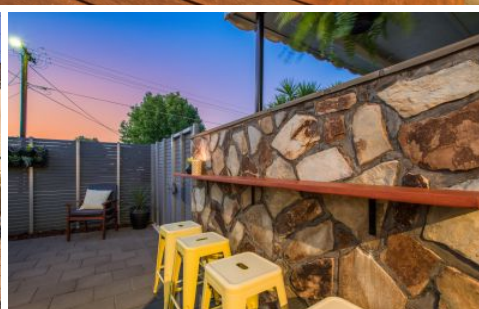
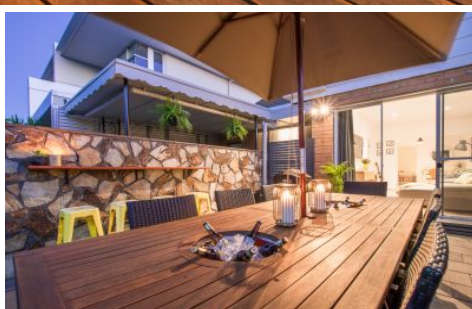


MAGAIN



7 Hamilton Street SOMERTON PARK SA

2  1  1 

Please contact Pete Fallon for viewing times.

Looking for an easy to maintain, beautifully presented homette close to the beach that has maximised every inch of space for entertaining, then look no further! This quality 2 bedroom home will not disappoint. Located west of Brighton road this quaint yet stylish home is a mere 500m from the beach front. Situated just off King George Avenue, local transport, local shopping and the vibrant nightlife of Glenelg and its surrounds are easily accessible.

A private front yard ideal for entertaining, awaits as you approach the property. You can sit against the beautiful stone feature wall with a cold beverage and nibbles whilst you talk amongst your friends, there is ample space for

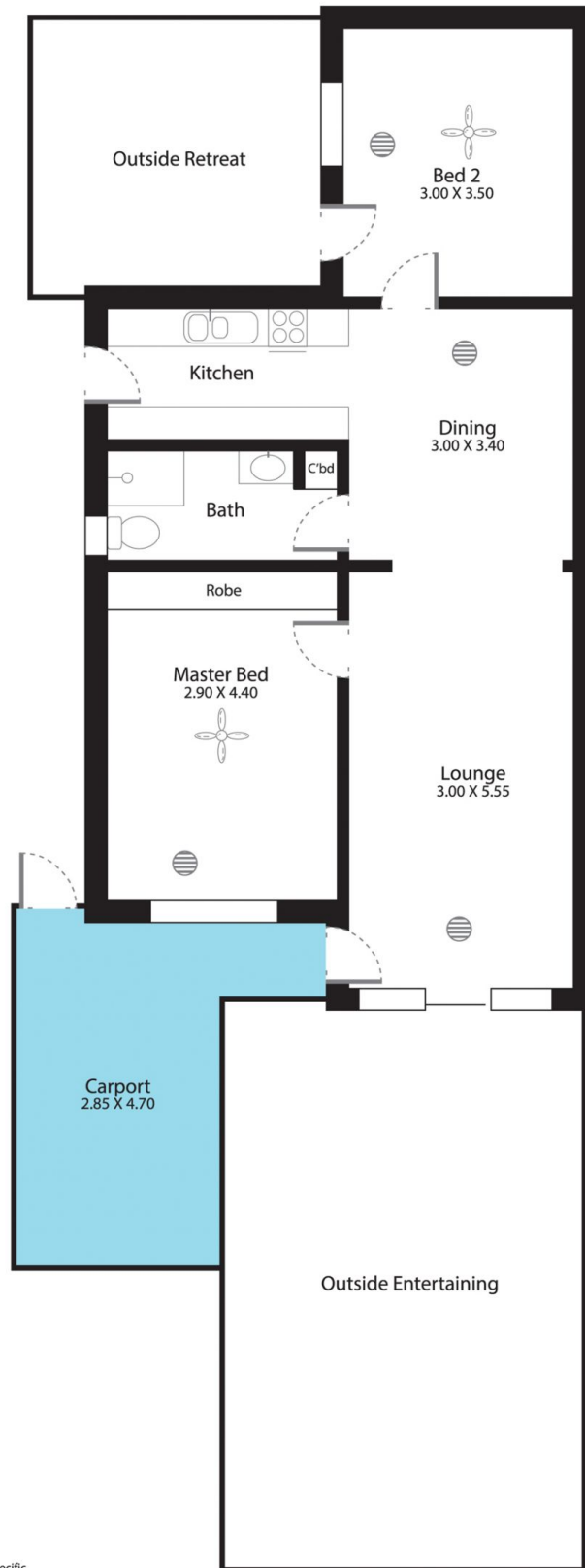
Type : House
Building Size : 8 sqm
Land Size : 154 sqm
View : <https://www.magain.com.au/property/7-hamilton-street-somerton-park-sa/8426476>

[For full version visit the website](https://www.magain.com.au)

<https://www.magain.com.au>
Magain Real Estate

52 Hillier Road Morphett Vale SA
08 8366 2292

7 Hamilton Street Somerton Park, South Australia



Picture intended as a reference only. Any specific measurements required should be obtained by an independent surveyor.