

MAGAIN



9 Wylpena Way REYNELLA EAST SA

3 1 3

This lovely house has lots of charm. A raked ceiling in the lounge give a great open feel and there's a built-in bar in the corner if you like to serve the odd cocktail. The 3 bedrooms are all carpeted, the master has a built in wardrobe and ceiling fan.

The kitchen/family room is spacious with a walk-in pantry. Dining room is separate and has a lovely wooden floor.

Outside, the drive-through gates at the side of house are suitable for a caravan or boat leading to the car port and garage. A large veranda runs along the rear giving lots of space to entertain outside.

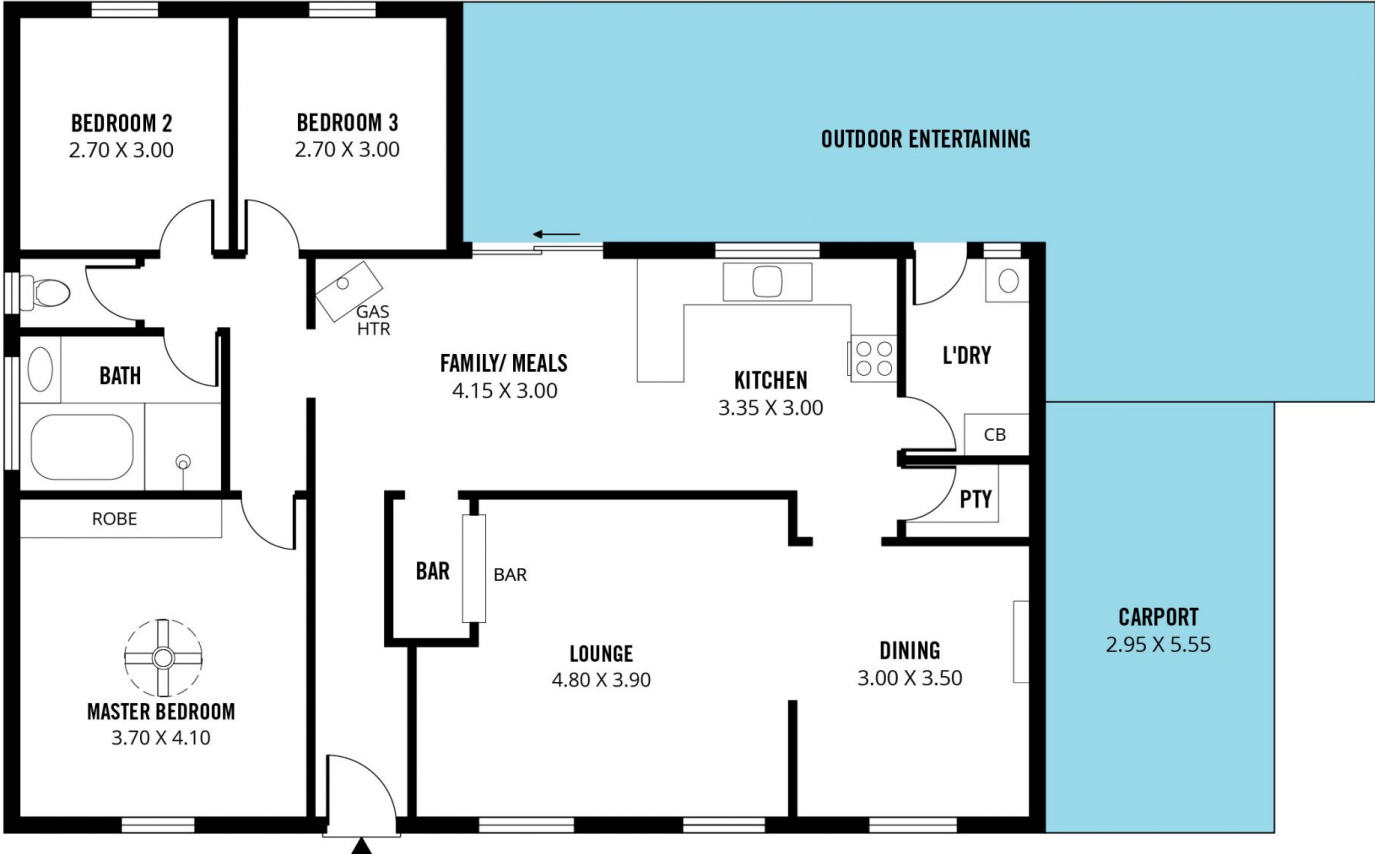
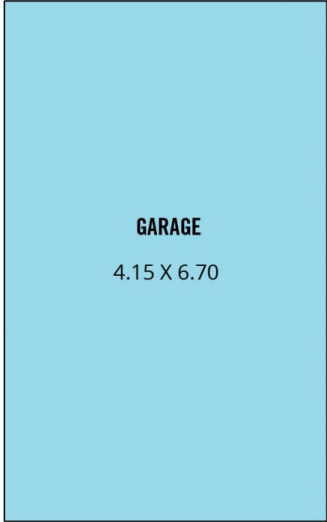
The back yard has a good-sized lawn for the kids to play on and a rear gate leading out to the park behind with walking/cycling trails along Glenloth Creek which flows down from the wetlands.

Type : House
Building Size : 13 sqm
Land Size : 586 sqm
View : <https://www.magain.com.au/property/9-wylpena-way-reynella-east-sa/8426490>



Debbie Glastonbury
08 8366 2292

[For full version visit the website](https://www.magain.com.au)



Scale in metres. This drawing is for illustration purposes only. All measurements are approximate and details intended to be relied upon should be independently verified.

Produced by **The Fotobase Group**