

# MAGAIN



## 3/1 Salisbury Terrace CAMDEN PARK SA

2  1  1 

Oozing street appeal, this beautiful cottage in a small group of three is sure to charm you. Located in the ever popular suburb of Camden Park, you are only meters away from the tram taking you to both the CBD and Glenelg. With fantastic quality schools at your fingertips and all the boutique shopping and the beach at Glenelg a 5 minute drive or tram ride, 3/1 Salisbury Terrace is going to suit you whether you are looking for your first home, downsizing or investing.

Stepping onto the property you'll instantly be captivated by it's charm. Moving inside, this home offers 2 bedrooms, both of fantastic size and each featuring built in wardrobes, ceiling fans and split system air conditioning.. you'll be sleeping comfortably all year round! The main, 3-way

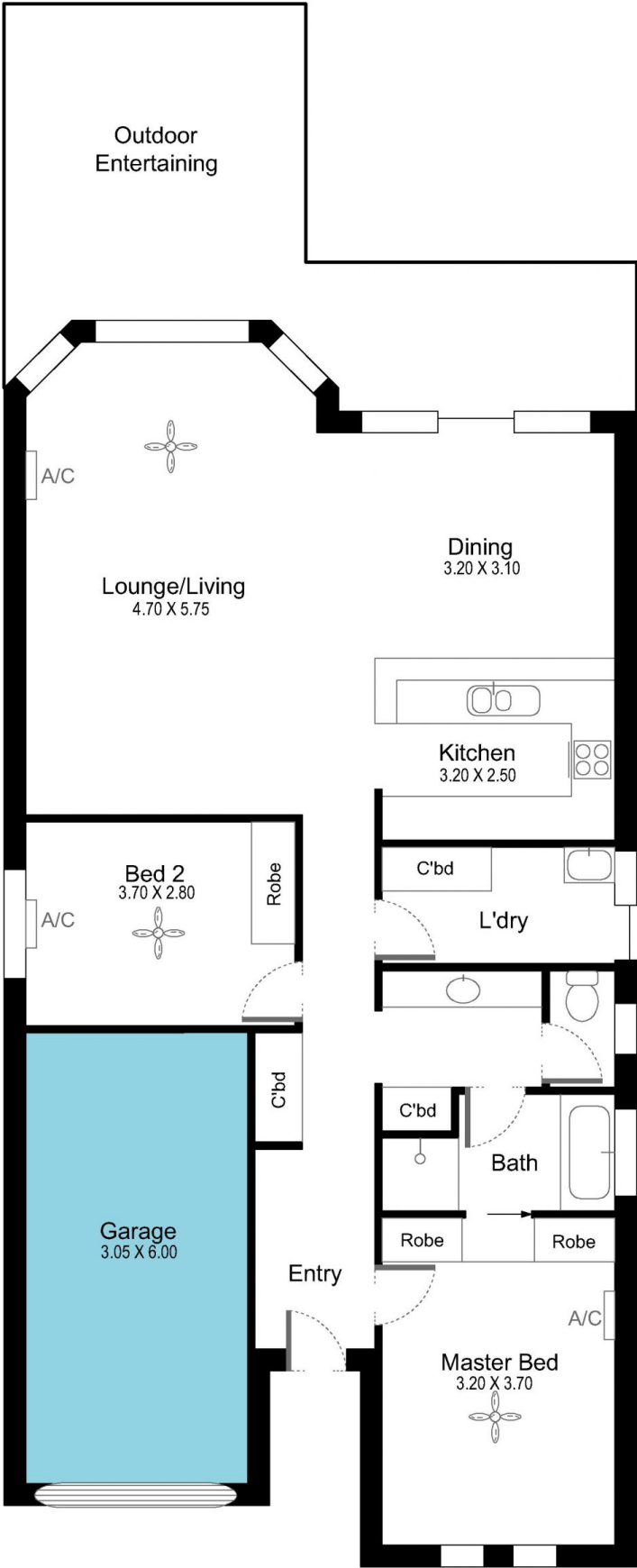
**Type** : House  
**Building Size** : 13 sqm  
**View** : <https://www.magain.com.au/property/31-salisbury-terrace-camden-park-sa/8426522>

[For full version visit the website](https://www.magain.com.au)

<https://www.magain.com.au>  
Magain Real Estate

52 Hillier Road Morphett Vale SA  
08 8366 2292

3/1 Salisbury Terrace Camden Park, South Australia



Picture intended as a reference only. Any specific measurements required should be obtained by an independent surveyor.