

MAGAIN



20 Wandilla Street SEAVIEW DOWNS SA

4 2 4

Contact Pete Fallon for viewing times

Located in the popular suburb of Seaview Downs this family home is sure to impress. Close to Westfield Marion, Flinders Hospital and University, only a short drive to Brighton Beach and in the Seaview Downs High School zone, this property is going to suit buyers across the board.

As you approach the home you will appreciate the abundance of off street parking available - 2 cars are able to park out on the driveway, plus two cars in the garage. The pit in the garage is an added bonus for all those mechanics and car enthusiasts! Heading inside you are greeted with the master bedroom at the front of the home, freshly carpeted with a built in wardrobe and ensuite. The

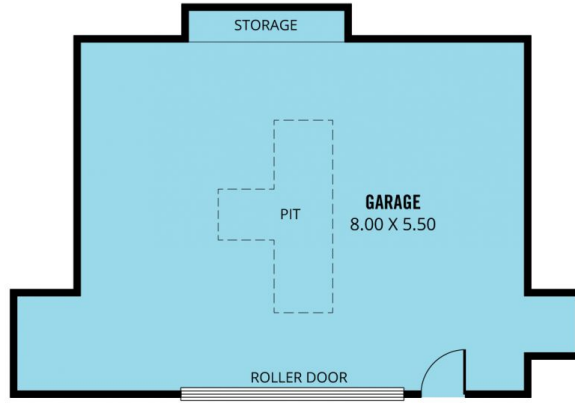
Type : House
Land Size : 772 sqm
View : <https://www.magain.com.au/property/20-wandilla-street-seaview-downs-sa/8426542>

[For full version visit the website](https://www.magain.com.au)

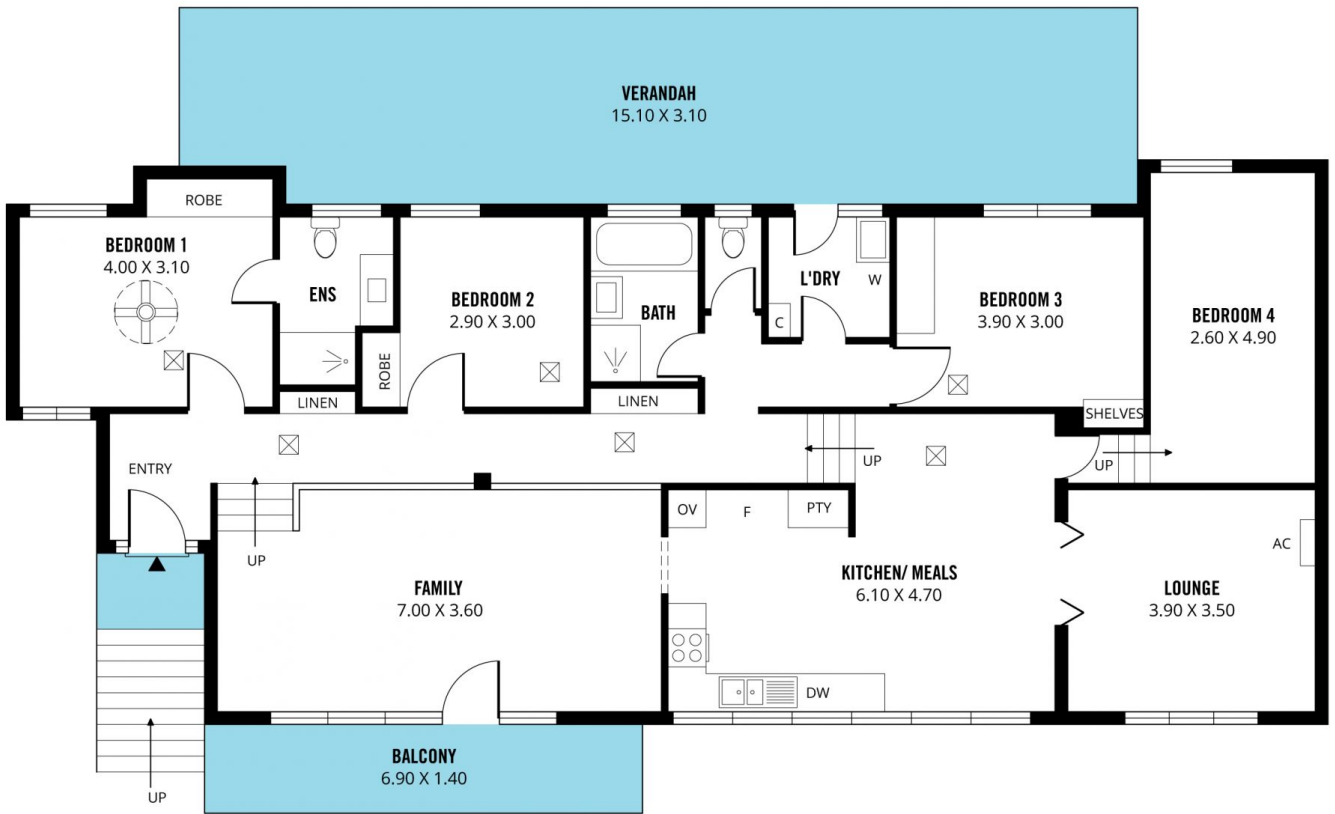
<https://www.magain.com.au>
Magain Real Estate

52 Hillier Road Morphett Vale SA
08 8366 2292

SHED
1.50 X 1.50



LOWER LEVEL



UPPER LEVEL



Scale in metres. This drawing is for illustration purposes only. All measurements are approximate and details intended to be relied upon should be independently verified.

Produced by **The Fotobase Group**