




MAGAIN



3 Kerry Street CHRISTIES BEACH SA

3  1  5 

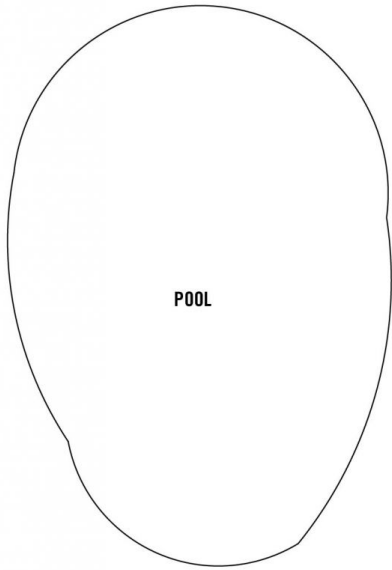
Please Contact Pete Fallon or Robbie Leigh to discuss a viewing time.

This solid family home sits on 799m² of prime real estate in the beautiful seaside suburb of Christies Beach. With 3 bedrooms, 1 bathroom, carport with drive through access to a decent sized shed, family friendly yard with undercover entertaining and a swimming pool... This property won't be on the market for long!

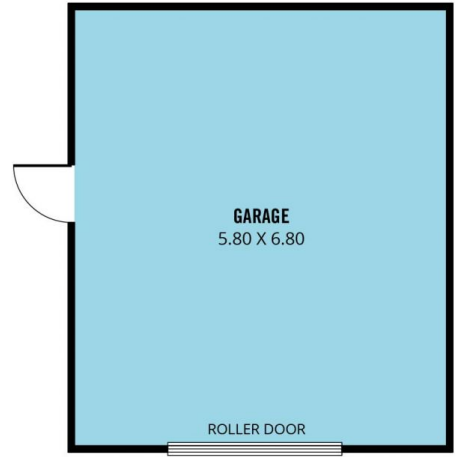
Conveniently located with easy access to both Lonsdale Highway and The Expressway, public transport, large variety of retail shopping, medical care and of course our gorgeous South Australian coastline.

Type : House
Building Size : 12 sqm
Land Size : 799 sqm
View : <https://www.magain.com.au/property/3-kerry-street-christies-beach-sa/8426551>

[For full version visit the website](https://www.magain.com.au)

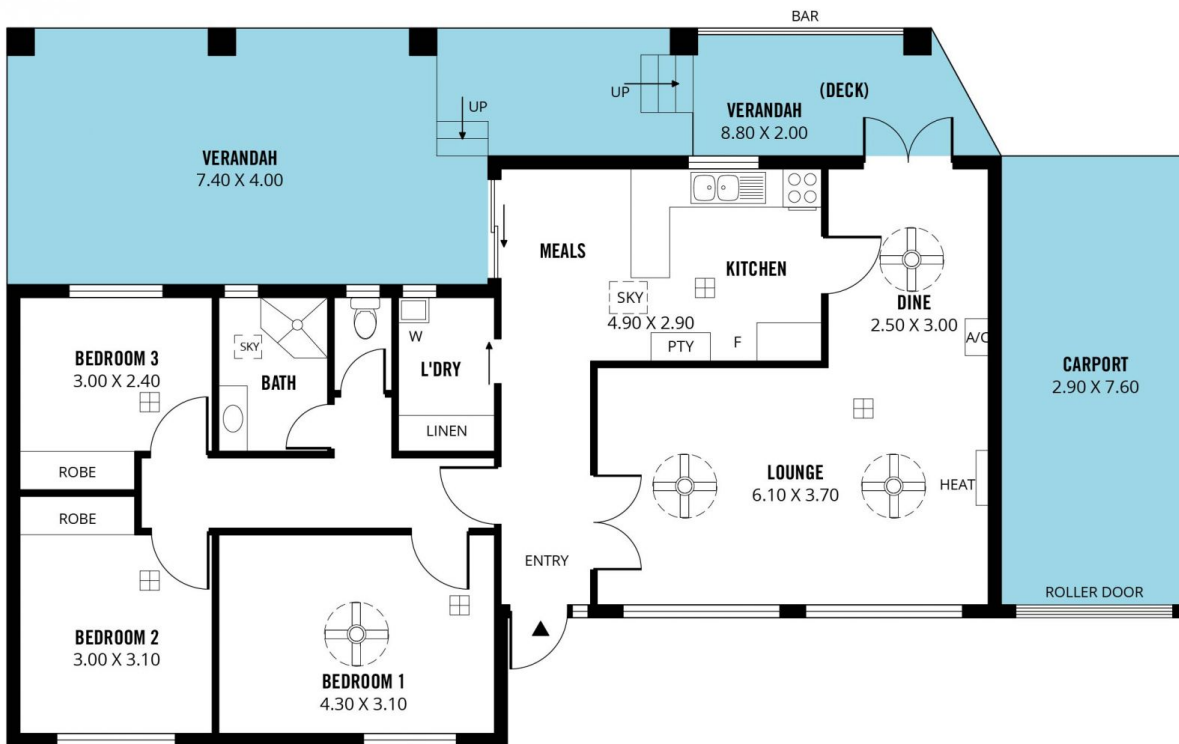


POOL



GARAGE
5.80 X 6.80

ROLLER DOOR



Scale in metres. This drawing is for illustration purposes only. All measurements are approximate and details intended to be relied upon should be independently verified.

Produced by **The Fotobase Group**