




# MAGAIN



## 15 Morningside Drive WOODCROFT SA

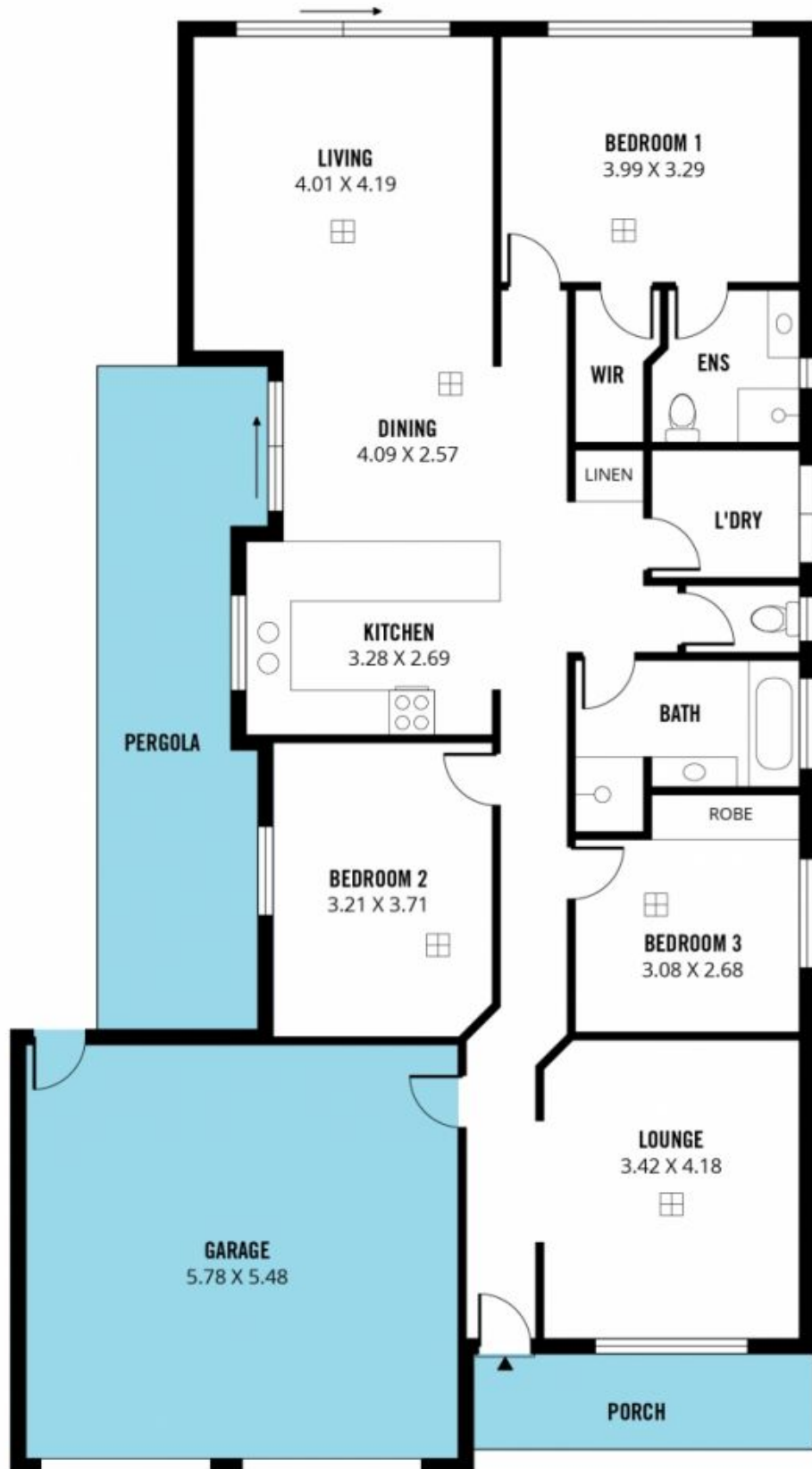
3  2  2 

Situated in arguably one of Woodcroft's most desirable locations, this perfectly presented family home has so much to offer. Thoughtfully built in 2001 overlooking the stunning nature of Thaxted Park Golf Course with schools, public transport and the local shopping centre all close-by. This would be the ideal property for astute investors to first home buyers or downsizers.

Entering this home just off the main hallway you will be captivated by the spacious formal lounge with inverted bulk head and ornate ceiling rose. The automatic garage also provides convenient internal access. This home boasts an open plan living, dining and lounge area with spectacular views. Three generous bedrooms, one with a built-in robe and the stunning master situated at the rear of the home -

**Type** : House  
**Building Size** : 17 sqm  
**Land Size** : 400 sqm  
**View** : <https://www.magain.com.au/property/15-morningside-drive-woodcroft-sa/8426563>

[For full version visit the website](https://www.magain.com.au/property/15-morningside-drive-woodcroft-sa/8426563)



Scale in metres. This drawing is for illustration purposes only. All measurements are approximate and details intended to be relied upon should be independently verified.

Produced by **The Fotobase Group**