




MAGAIN



1 Branksome Terrace DOVER GARDENS SA

3  2  4 

This stylish family home has so much to offer. Situated in the highly sought-after suburb of Dover Gardens, local quality schools and popular shopping mall Westfield Marion are at your fingertips as well as public transport to quickly get you into town. The beautiful Brighton and Seacliff beaches are merely a 5-minute drive down the road.

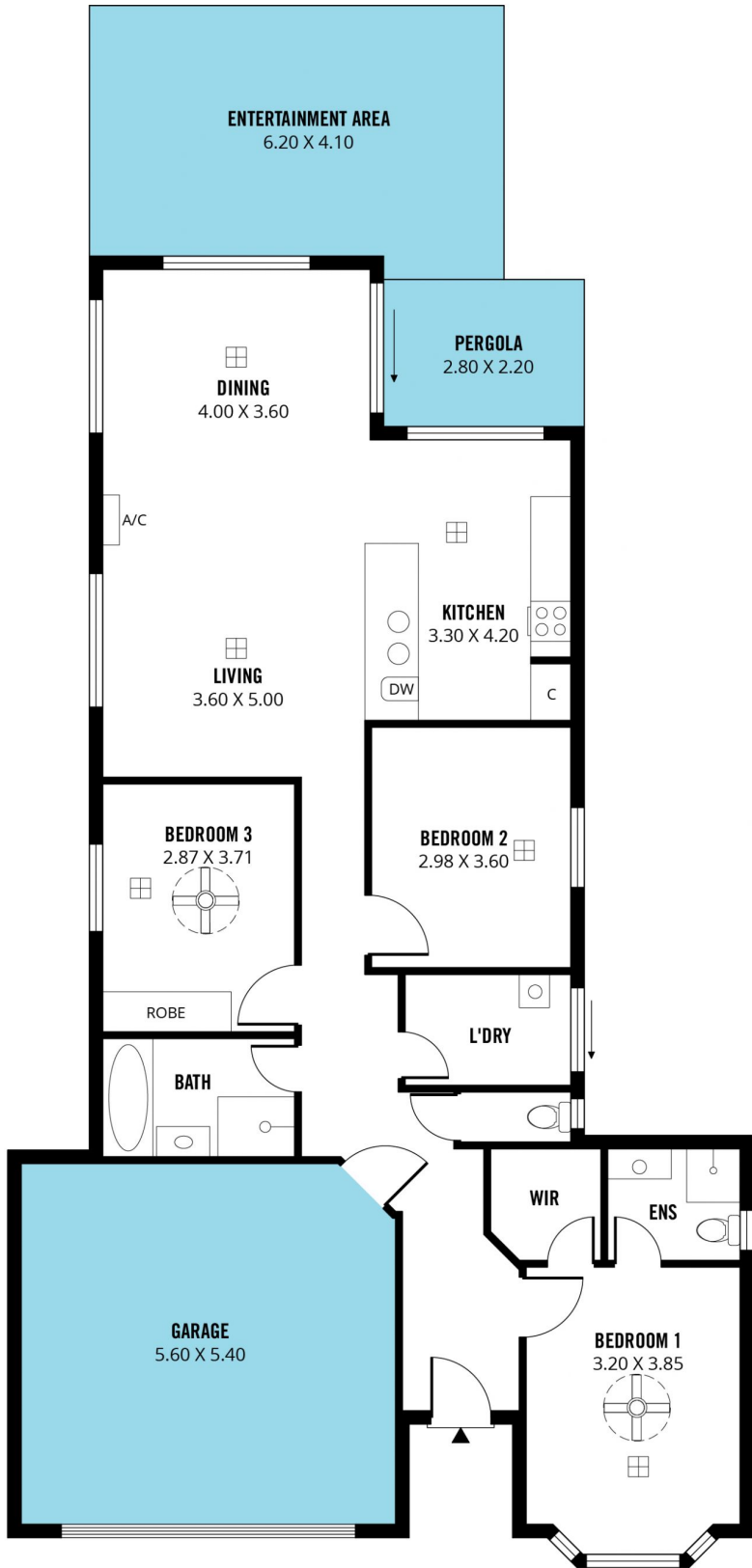
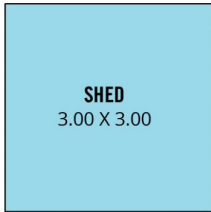
The beautiful facade and panel lift door on the double garage is what will capture your attention and as you enter this home, luxury awaits you at every corner with quality finishing's throughout. You're greeted by the stunning master suite at the front of the home, which has a bay window for added space, a larger than usual walk in wardrobe and the ensuite which is complete with temperature control water system. Ducted air conditioning

Type : House
Building Size : 16 sqm
Land Size : 373 sqm
View : <https://www.magain.com.au/property/1-branksome-terrace-dover-gardens-sa/8426575>

[For full version visit the website](https://www.magain.com.au)

<https://www.magain.com.au>
Magain Real Estate

52 Hillier Road Morphett Vale SA
08 8366 2292



Scale in metres. This drawing is for illustration purposes only. All measurements are approximate and details intended to be relied upon should be independently verified.

Produced by **The Fotobase Group**