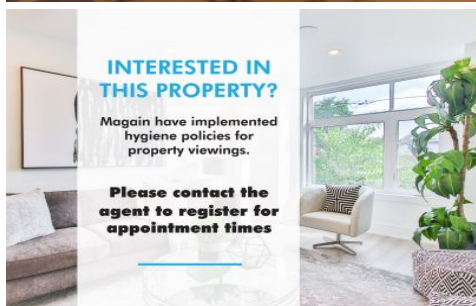


MAGAIN



135 Oaklands Road WARRADALE SA

3 1 6

Contact Robbie Leigh to discuss a viewing time!

This solid brick home sits privately behind a high brush hedge and welcomes first home buyers, investors, renovators, or anyone looking for a generous sized block in the sought-after suburb of Warradale. These don't come by every day and it won't be on the market for long!

Sitting proudly on approximately 684m², this home is conveniently located in between Glenelg and the Westfield Marion Shopping Centre. Close to quality schools, local facilities, transport options, parks, recreation and a quick drive to Adelaide's beautiful beaches or the CBD.

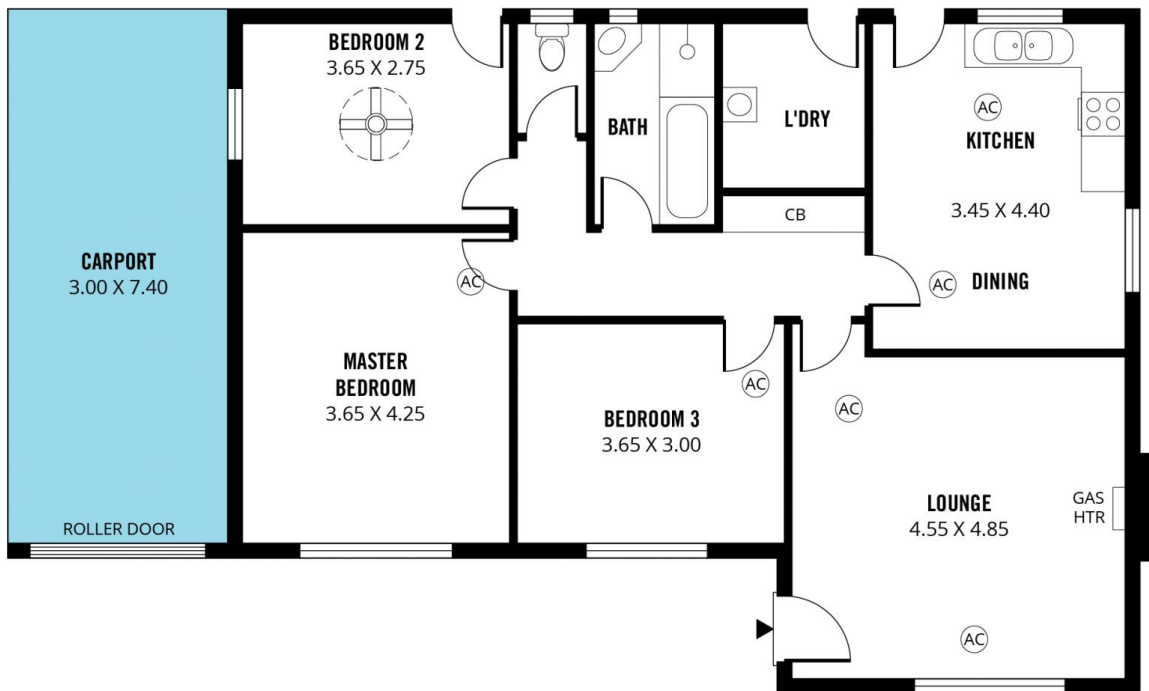
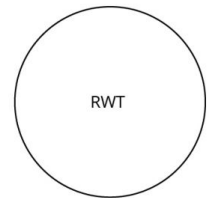
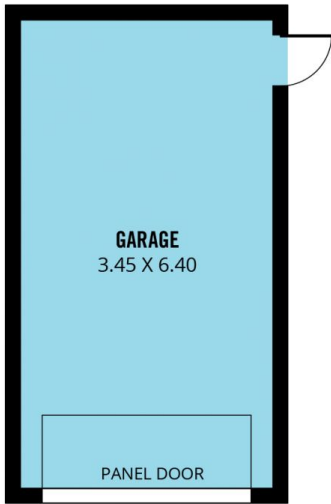
Entering the home you will love the polished timber floorboards and the abundance of natural light flowing

[For full version visit the website](https://www.magain.com.au/property/135-oaklands-road-warradale-sa/8426636)

Type : House
Land Size : 684 sqm
View : <https://www.magain.com.au/property/135-oaklands-road-warradale-sa/8426636>



Robbie Leigh
08 8366 2292



Scale in metres. This drawing is for illustration purposes only. All measurements are approximate and details intended to be relied upon should be independently verified.

Produced by **The Fotobase Group**