




# MAGAIN



## 7 Bayford Rise MORPHETT VALE SA

3  2  1 

Located on a quiet street in the fast moving suburb of Morphett Vale, this three bedroom home delivers the ultimate in low maintenance living, perfect for first home buyers, those looking to upsize or investors looking for that special property that stands out from the rest. Delightfully located opposite the tranquil Christie Creek Reserve and walking trail, and positioned in close proximity to Southgate Square, Colonnades Shopping Centre, quality local schools and easy access to the Southern Expressway.

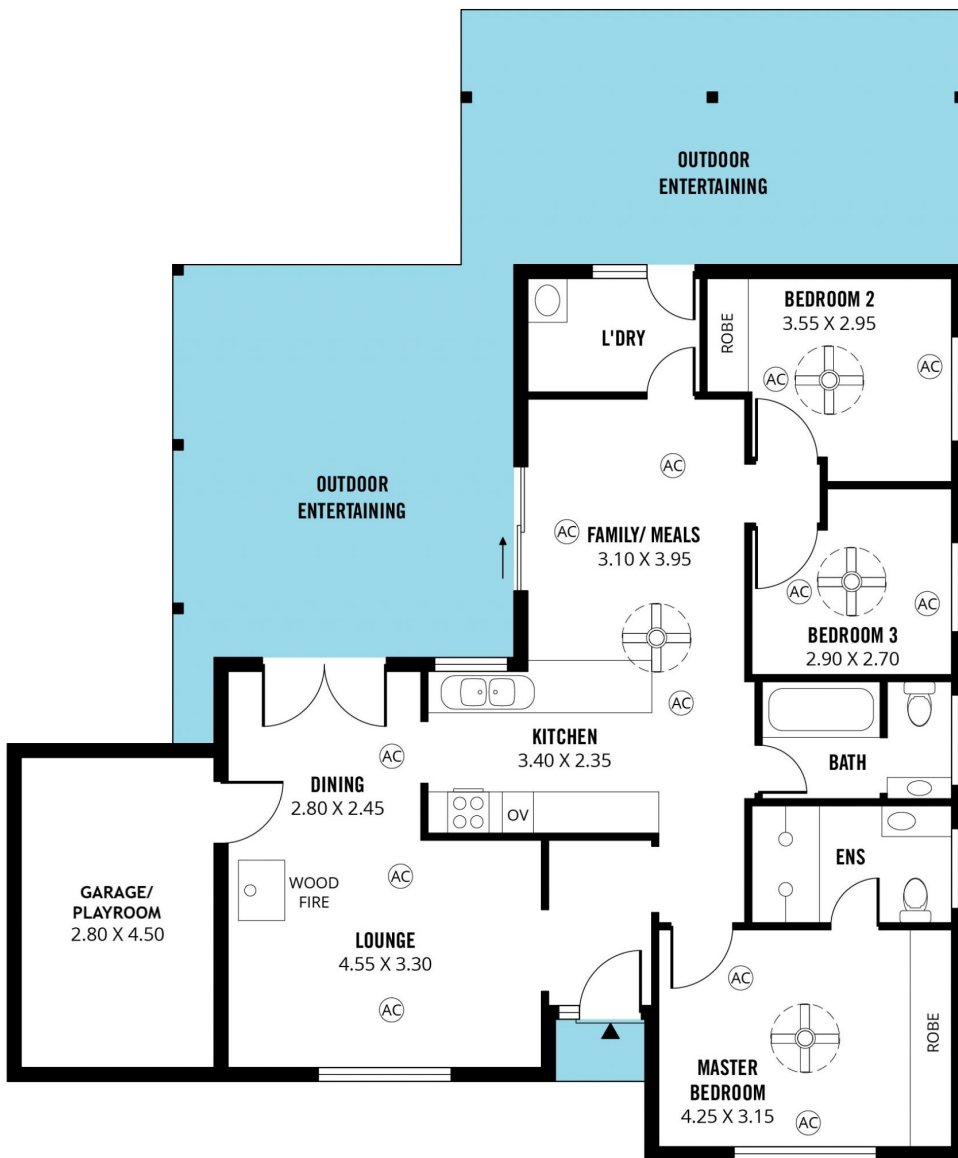
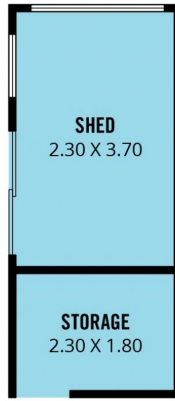
Upon entry you are welcomed by the spacious formal lounge and dining area which is kept cosy with a combustion fire place and boasts double french doors allowing convenient access to the outdoor entertaining area. Off the living area is access to the converted garage

**Type** : House  
**Building Size** : 12 sqm  
**Land Size** : 725 sqm  
**View** : <https://www.magain.com.au/property/7-bayford-rise-morphett-vale-sa/8426659>

[For full version visit the website](https://www.magain.com.au)

<https://www.magain.com.au>  
Magain Real Estate

52 Hillier Road Morphett Vale SA  
08 8366 2292



Scale in metres. This drawing is for illustration purposes only. All measurements are approximate and details intended to be relied upon should be independently verified. Produced by **The Fotobase Group**