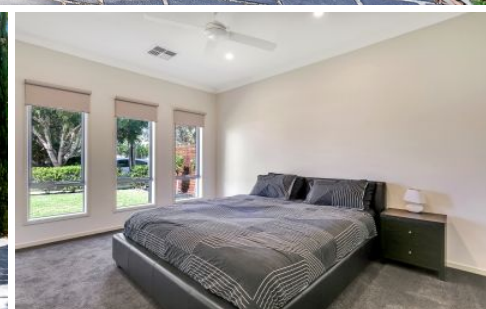


# MAGAIN



25A Sutton Avenue SEACOMBE GARDENS SA

4  2  2 

This stunning family home is situated in the highly desirable suburb of Seacombe Gardens. The modern facade is sure to please and as you enter the home you are sure to fall in love with the spacious homely feel throughout. The tall ceilings and wide entryway give a sense of grandeur. At the front of the home is the generous master suite which features LED downlights and quality ceiling fan for those balmy nights. A walk-through wardrobe with plenty of storage leads you to the large ensuite.

Down the hallway are two spacious bedrooms with built in wardrobes and opposite the large three way bathroom perfect for the whole family. The star of the home is the huge kitchen, flooded with natural light and has quality stainless steel appliances that will service the needs of the

**Type** : House  
**Building Size** : 18 sqm  
**Land Size** : 368 sqm  
**View** : <https://www.magain.com.au/property/25-a-sutton-avenue-seacombe-gardens-sa/8426670>

[For full version visit the website](https://www.magain.com.au)

<https://www.magain.com.au>  
Magain Real Estate

52 Hillier Road Morphett Vale SA  
08 8366 2292

