

# MAGAIN



4 Wahratta Avenue MORPHETT VALE SA

3  1  2 

Please contact Pete Fallon for viewing times

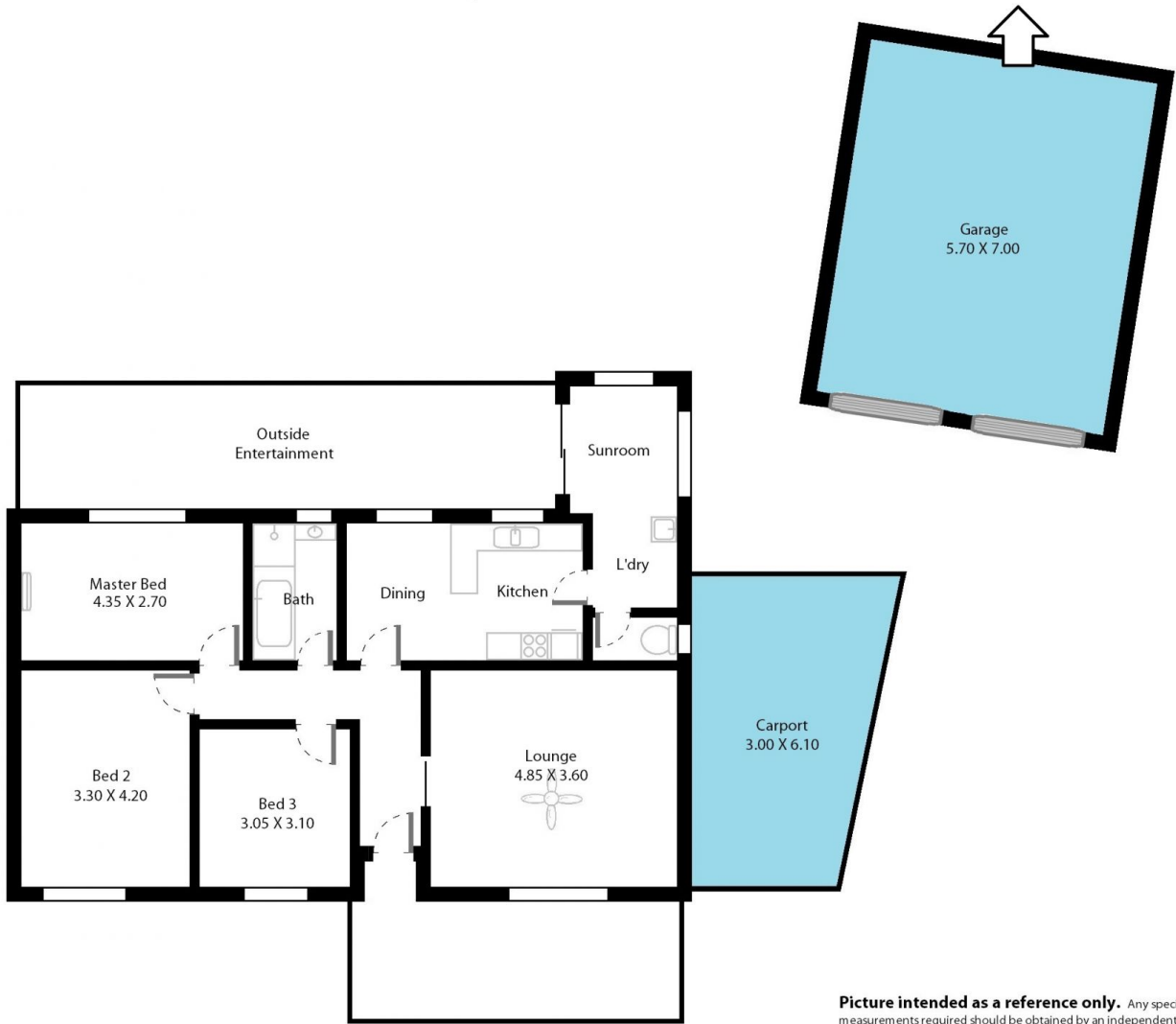
Tucked away in this fantastic pocket of Morphett Vale, this cute 3 bedroom home is sure to suit buyers from all different stages in life. Within walking distance to Southgate Plaza, great quality primary schools and public transport, the Southern Expressway only a minute away and a 5 minute drive to the glorious Southern Coastline, it is hard to beat the location of this property!

As you approach this north facing property, you will notice how peaceful the street is. Located on a no through road and opposite a well looked after reserve, you will feel immediately comfortable. Heading into the home you are greeted with a formal lounge room on the right, complete

**Type** : House  
**Land Size** : 837 sqm  
**View** : <https://www.magain.com.au/property/4-wahratta-avenue-morphett-vale-sa/8426690>

[For full version visit the website](https://www.magain.com.au)

4 Wahratta Morphatt Vale, South Australia.



**Picture intended as a reference only.** Any specific measurements required should be obtained by an independent surveyor.