




MAGAIN



3/17 Sampson Road MITCHELL PARK SA

2  1  1 

Please contact Pete Fallon for viewing times.

Look no further for that perfect investment or downsizers homette. Located in a quiet pocket of Mitchell Park, self managed in a small group of three, this freshly painted 2 bedroom property has a spacious living area, new kitchen with plenty of cupboard space and separate laundry with built-ins.

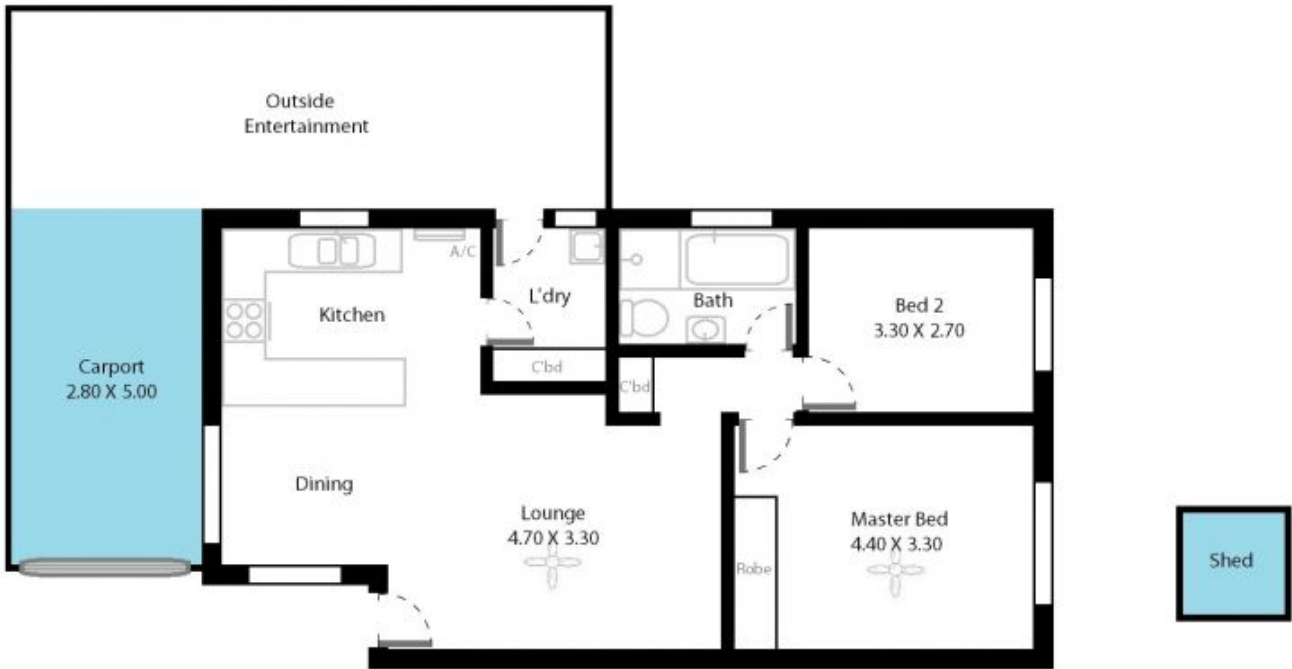
The large master bedroom has built in robes and window shutters and good size second bedroom, also with shutters. Original bathroom with shower, tub, w.c. and new vanity. At the rear there is a lovely easy care yard and small garden with tool shed, undercover entertaining area and lock up carport.

Conveniently located close to both train stations and bus routes, great shopping complexes like Marion and Park

Type : Unit
Building Size : 9 sqm
View : <https://www.magain.com.au/property/31-7-sampson-road-mitchell-park-sa/8426693>

[For full version visit the website](https://www.magain.com.au)

Unit 3/17 Sampson Road Mitchell Park, South Australia.



Picture intended as a reference only. Any specific measurements required should be obtained by an independent surveyor.