

MAGAIN



We want to keep our beautiful state,
and our vendors' homes safe.
So please wear a mask at
our open inspections.

magain
REAL ESTATE



43 Eurunderee Avenue SEACOMBE GARDENS SA

3 1 1

Contact Pete Fallon for viewing times.

Located in the popular suburb of Seacombe Gardens and directly opposite a cute reserve with play equipment, this modern townhouse is sure to delight. Close to Westfield Shopping Centre for all your shopping needs, great schools including Seaview High School and Stella Maris, public transport at your fingertips taking you to the CBD or Glenelg and Brighton Beach only a short drive, this location has it all.

Entering the spacious townhouse you will find a great sized open plan living area downstairs. The kitchen is a great size with plenty of bench and cupboard space and comes with built in pantry, a gas cooktop and electric oven. The

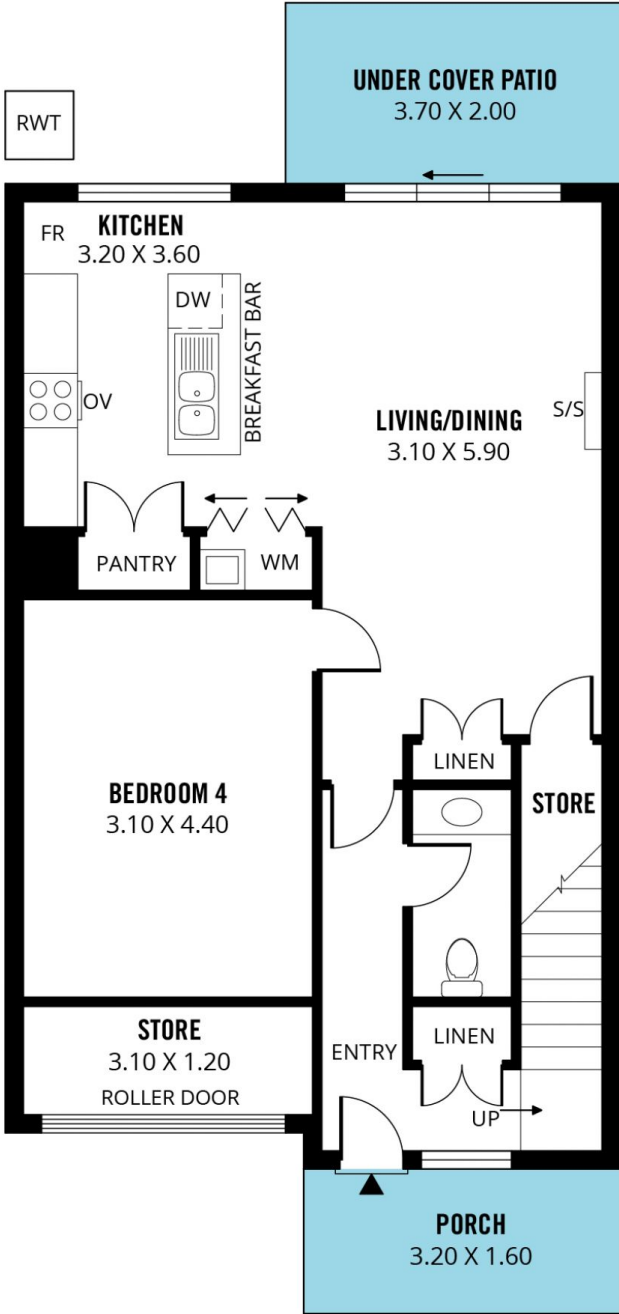
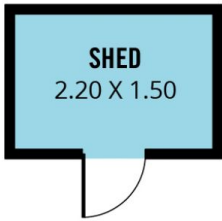
Type : House
Building Size : 16 sqm
Land Size : 222 sqm
View : <https://www.magain.com.au/property/43-eurunderee-avenue-seacombe-gardens-sa/8426714>

[For full version visit the website](https://www.magain.com.au)

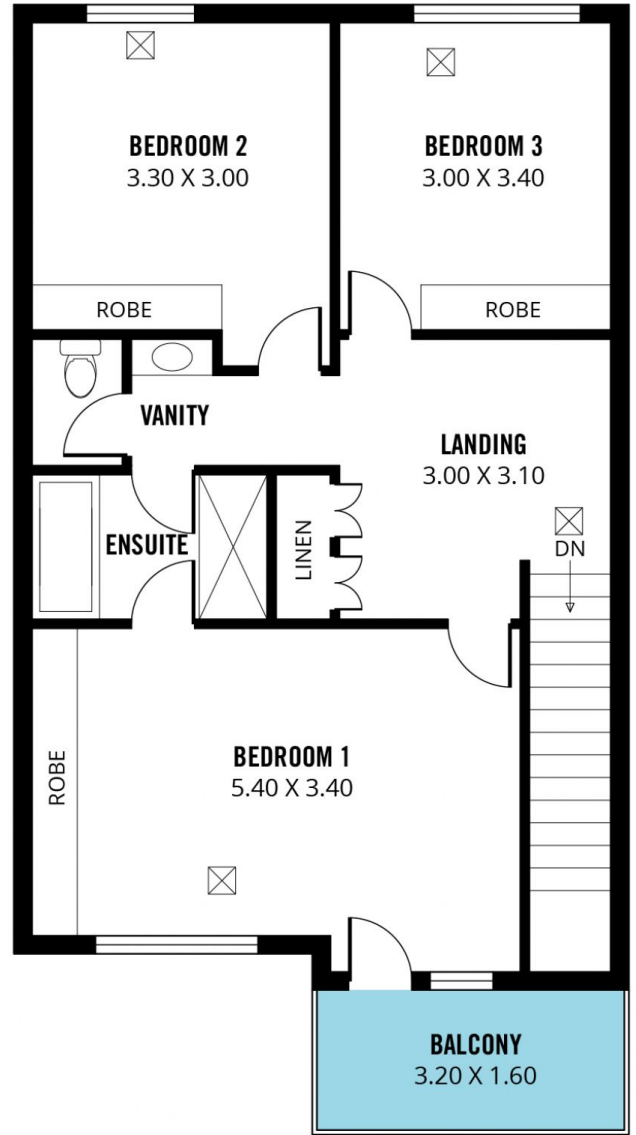
<https://www.magain.com.au>
Magain Real Estate

52 Hillier Road Morphett Vale SA
08 8366 2292

NOT IN POSITION



GROUND FLOOR



FIRST FLOOR

Scale in metres. This drawing is for illustration purposes only. All measurements are approximate and details intended to be relied upon should be independently verified. Produced by **The Fotobase Group**