

MAGAIN



6/164 Hub Drive ABERFOYLE PARK SA

3  1  3 

Whether looking for your new home or a solid investment please contact Robbie Leigh to discuss...

This neat three-bedroom, double garage home, has been updated and is in the highly sought-after suburb of Aberfoyle Park!

The property is low maintenance with a functional floor plan, decent sized block with enough room for backyard and outdoor entertaining!

This home is ideal for first home buyers, investors or those looking to downsize without downgrading on lifestyle.

Highlights:

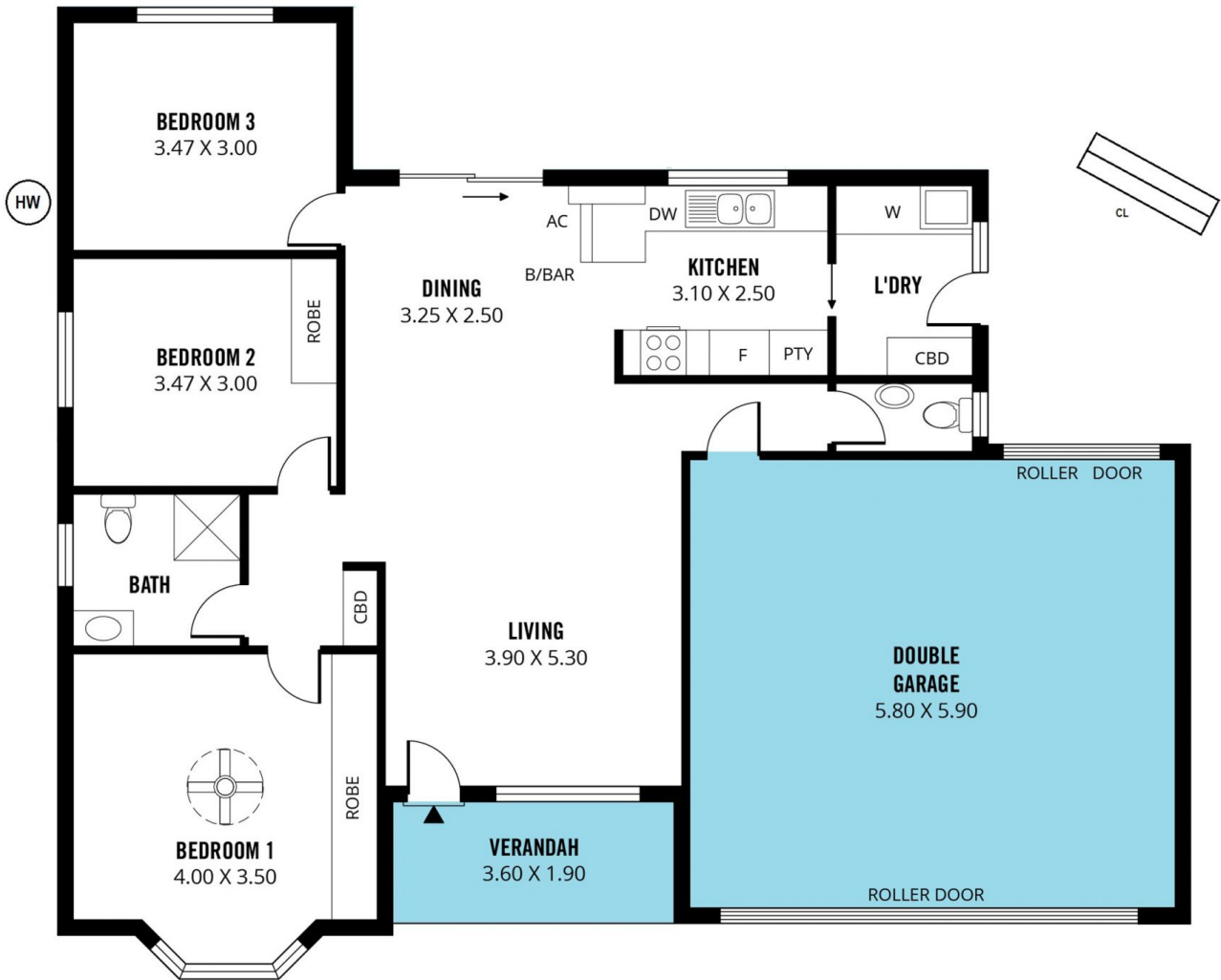
- Double Garage parking with internal access to home

[For full version visit the website](https://www.magain.com.au/property/61-64-hub-drive-aberfoyle-park-sa/8426758)

Type : House
Building Size : 14 sqm
Land Size : 400 sqm
View : <https://www.magain.com.au/property/61-64-hub-drive-aberfoyle-park-sa/8426758>



Robbie Leigh
08 8366 2292



Scale in metres. This drawing is for illustration purposes only. All measurements are approximate and details intended to be relied upon should be independently verified.

Produced by **The Fotobase Group**