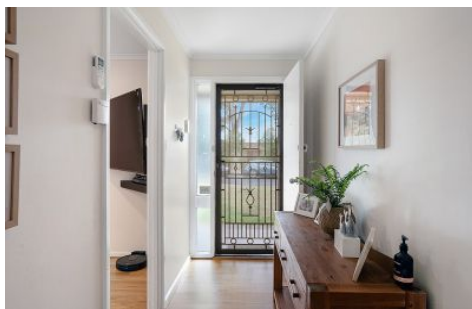


MAGAIN



36 Ellis Avenue MORPHETT VALE SA

3 1 1

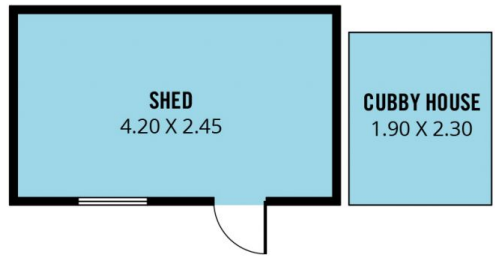
Contact Pete Fallon for viewing times.

Located in the ever popular suburb of Morphett Vale, this tastefully updated family home is sure to impress. Conveniently located only a couple minutes drive from Colonnades Shopping Centre and the Southern Expressway taking you easily towards the CBD or down to the McLaren Vale wine region. Great quality schools are nearby such as Cardijn College and Woodcroft College. Public transport is at your fingertips and the glorious southern coastline is nearby, there is so much to appreciate about this location!

As you approach the home you will appreciate the well kept nature of the property, with its large front yard, recently

[For full version visit the website](https://www.magain.com.au/property/36-ellis-avenue-morphett-vale-sa/8426761)

Type : House
Building Size : 12 sqm
Land Size : 678 sqm
View : <https://www.magain.com.au/property/36-ellis-avenue-morphett-vale-sa/8426761>



Scale in metres. This drawing is for illustration purposes only. All measurements are approximate and details intended to be relied upon should be independently verified.

Produced by **The Fotobase Group**