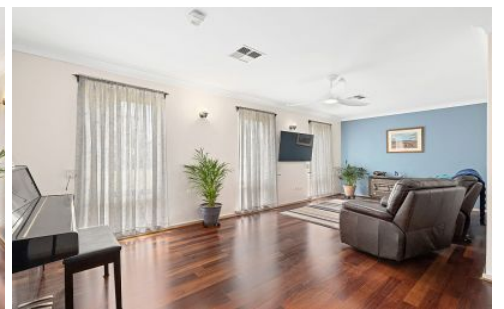





MAGAIN



12 Naomi Avenue MORPHETT VALE SA

3  1  2 

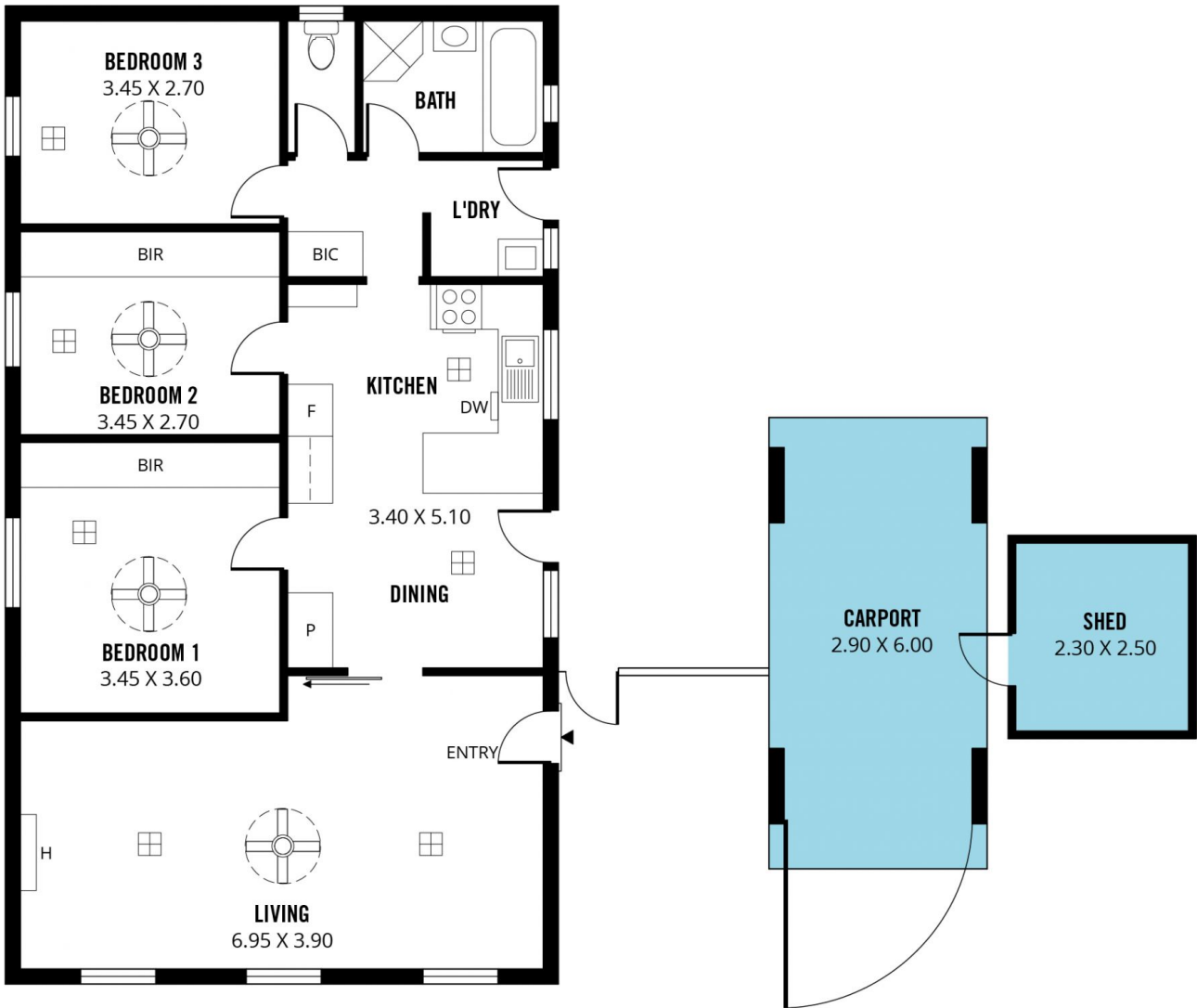
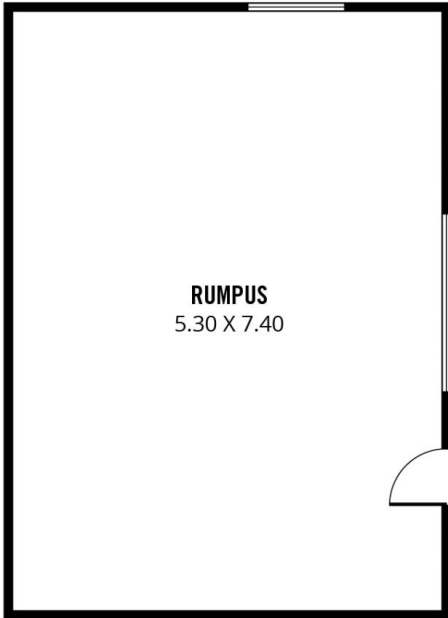
Contact Pete Fallon for viewing times.

Located in the incredibly popular suburb of Morphett Vale, this updated home is sure to tick all the boxes.

There really is so much to love about living here, being within walking distance of great quality schools including Wirreanda Secondary School and Coorara Primary School and the newly upgraded Wilfred Taylor Reserve. Public transport is easily accessible, with a 5 minute walk to bus services towards the CBD, Colonnades Shopping Centre, Flinders Medical Centre or Westfield Marion. The glorious southern coastline and McLaren Vale wine district are only a short drive away. And with an 18.7 meter frontage, this property is ripe for future development (STCC).

[For full version visit the website](https://www.magain.com.au/property/12-noami-avenue-morphett-vale-sa/8426770)

Type : House
Price : \$ 492,000
Land Size : 712 sqm
View : <https://www.magain.com.au/property/12-noami-avenue-morphett-vale-sa/8426770>



Scale in metres. This drawing is for illustration purposes only. All measurements are approximate and details intended to be relied upon should be independently verified.

Produced by **The Fotobase Group**