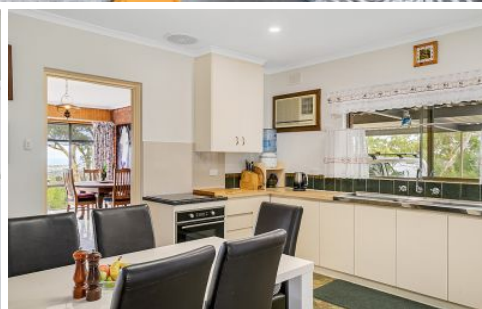


MAGAIN



450 Bains Road Onkaparinga Hills SA

3 1 3

This lovely property is at the top of Bains Rd heading towards the Onkaparinga River National Park. The views take you across the bush land, hills and suburbs right out to sea and on a clear day you can see the other side of the peninsula! Sun sets are simply amazing!

Only being a few minutes from everything you need with Woodcroft Shopping Centre mere minutes away and there are several local schools to choose from.

This 10 acre property would be ideal for horses, sheep or any livestock, currently tenanted by 3 alpacas who would love to stay! There is a variety of sheds and barns.

The home has 3 good sized bedrooms all with carpets, 2

[For full version visit the website](https://www.magain.com.au/property/450-bains-road-onkaparinga-hills-sa/8426773)

Type : House
Price : \$ 970,000
Building Size : 13 sqm
Land Size : 40400 sqm
View : <https://www.magain.com.au/property/450-bains-road-onkaparinga-hills-sa/8426773>



Debbie Glastonbury
08 8366 2292

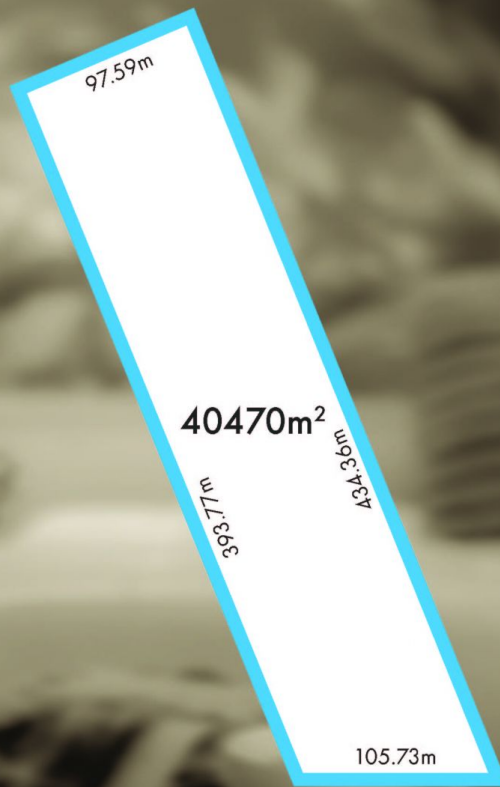
<https://www.magain.com.au>
Magain Real Estate

52 Hillier Road Morphett Vale SA
08 8366 2292



Scale in metres. This drawing is for illustration purposes only. All measurements are approximate and details intended to be relied upon should be independently verified.

Produced by **The Fotobase Group**



BAINS ROAD



Scale in metres. This drawing is for illustration purposes only. All measurements are approximate and details intended to be relied upon should be independently verified.

Produced by **The Fotobase Group**