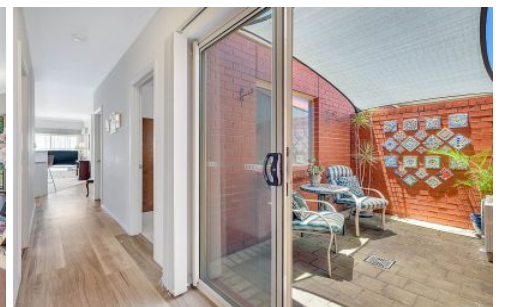
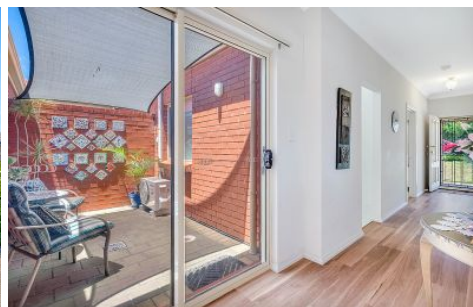


MAGAIN



13H White Crescent SEACOMBE GARDENS SA

3 1 2

Contact Pete Fallon for viewing times

Located in the highly desirable suburb of Seacombe Gardens, being close to Westfield Marion and other local shopping centres, great schools only a small walk away, Flinders University and Hospital close by and Brighton Beach is only mere minutes, this home is sure to tick the boxes for buyers from all walks in life!

Entering the home you will appreciate the great street appeal, with the beautiful front garden and bullnose veranda. Entering the home you will find the large master bedroom on the right, complete with ceiling fan and walk in wardrobe. The master bedroom has ensuite access to the three way bathroom for added convenience. Continuing

Type : House
Building Size : 15 sqm
Land Size : 350 sqm
View : <https://www.magain.com.au/property/13-h-white-crescent-seacombe-gardens-sa/8426784>

[For full version visit the website](https://www.magain.com.au)

<https://www.magain.com.au>
Magain Real Estate

52 Hillier Road Morphett Vale SA
08 8366 2292

