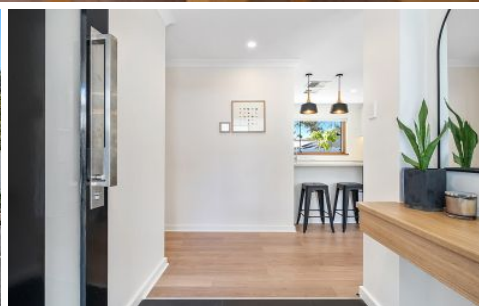


MAGAIN



46 Hub Drive ABERFOYLE PARK SA

3  1  4 

Contact Pete Fallon for viewing times.

Located in the leafy suburb of Aberfoyle Park, this stunningly renovated family home is sure to appeal to a range of buyers, from investors to first home buyers and downsizers. Only a short walk to The Hub Shopping precinct for all your shopping and transport needs, as well as the public library facilities on offer. There are plenty of schools to choose from including Aberfoyle Park High School and Pilgrim School. And being right in the foothills, it feels like you're away from everything while being so close to everything - it really is the perfect location!

As you approach the home you will appreciate the privacy screening, nicely rendered front and well manicured

[For full version visit the website](https://www.magain.com.au/property/46-hub-drive-aberfoyle-park-sa/8426787)

Type : House
Building Size : 12 sqm
Land Size : 692 sqm
View : <https://www.magain.com.au/property/46-hub-drive-aberfoyle-park-sa/8426787>

