

# MAGAIN



62 Dingera Avenue NORTH PLYMPTON SA

4  2  4 

Contact Pete Fallon for viewing times.

Located less than 10km from the CBD and so close to shops and public transport, this rare opportunity cannot be missed. With an easy drive through to the CBD or straight down Anzac Highway to Glenelg, and great schools nearby including Emmanuel College and Plympton International College, this location is perfect for buyers from all walks in life.

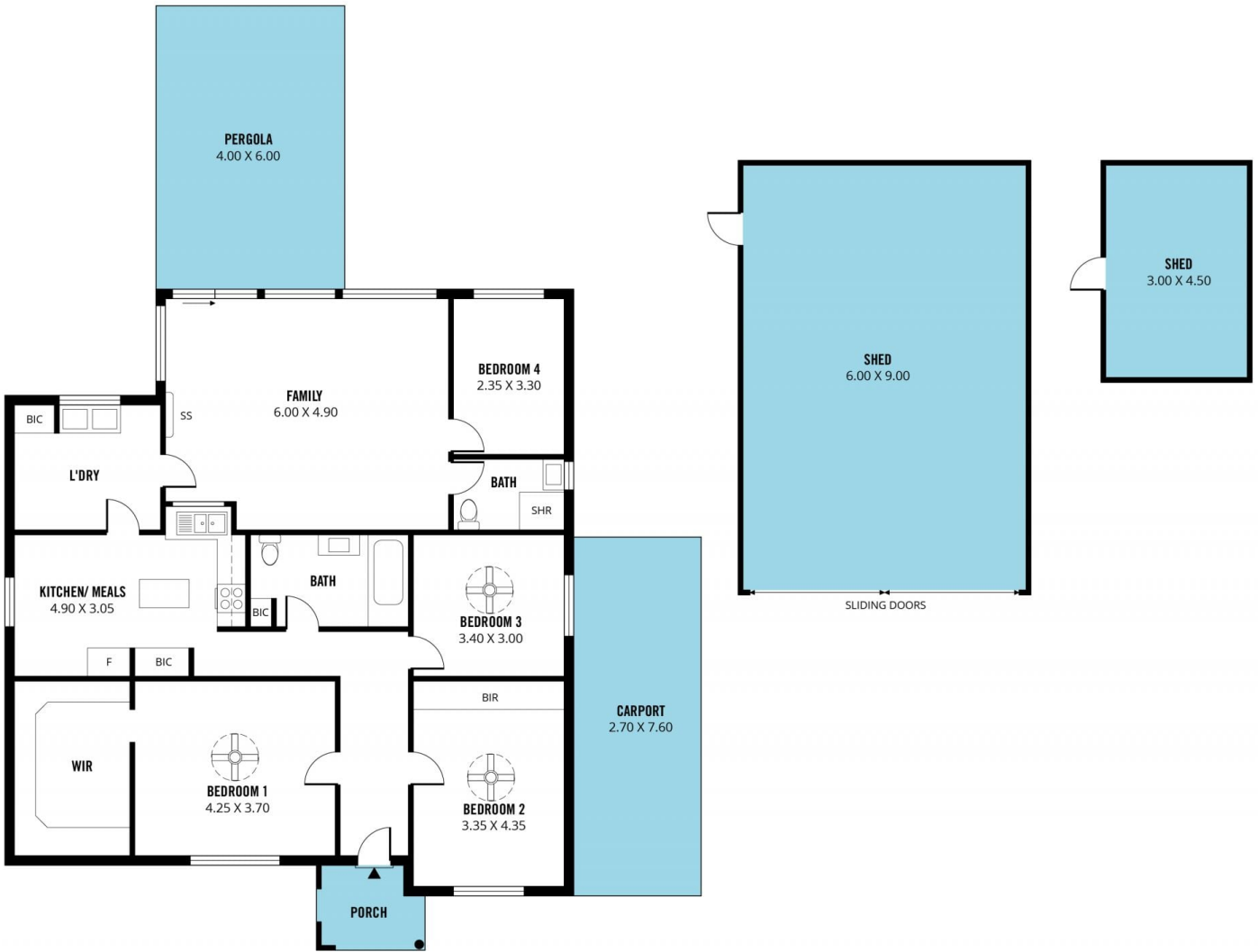
Entering the home you are greeted with the master bedroom on the left, complete with ceiling fan and huge walk in wardrobe. There are three remaining bedrooms, with two of them having ceiling fans and the second bedroom also including a built in wardrobe. The central

**Type** : House  
**Building Size** : 14 sqm  
**Land Size** : 746 sqm  
**View** : <https://www.magain.com.au/property/62-dingera-avenue-north-plympton-sa/8426789>

[For full version visit the website](https://www.magain.com.au)

<https://www.magain.com.au>  
Magain Real Estate

52 Hillier Road Morphett Vale SA  
08 8366 2292



Scale in metres. This drawing is for illustration purposes only. All measurements are approximate and details intended to be relied upon should be independently verified.

Produced by **The Fotobase Group**