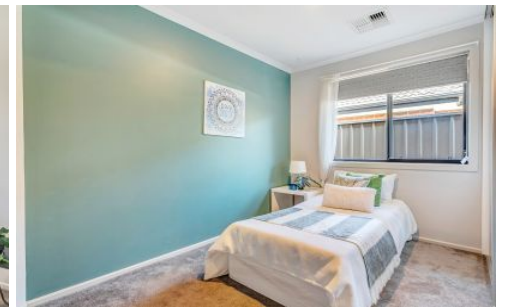





MAGAIN



25 School Oval Drive CHRISTIE DOWNS SA

3  2  2 

Contact Pete Fallon for viewing times

Located in the new estate in this popular location, this 3 bedroom home is suitable for a range of buyers. Only moments away from Colonnades Shopping Centre and Noarlunga Railway, taking you quickly into the city, close to good schools such as Calvary Primary and Cardijn College, and a short drive to the glorious southern coastline, this home won't last long!

Entering the home you are greeted with a second, formal living at the front of the home - the perfect place for a kids play area or a quiet lounge space. Heading down the hall you will reach the open planned kitchen and dining area, the kitchen complete with an island bench top, so much

Type : House
Building Size : 14 sqm
Land Size : 300 sqm
View : <https://www.magain.com.au/property/25-school-oval-drive-christie-downs-sa/8426792>

[For full version visit the website](https://www.magain.com.au)

<https://www.magain.com.au>
Magain Real Estate

52 Hillier Road Morphett Vale SA
08 8366 2292

