

MAGAIN



56 Woodend Road SHEIDOW PARK SA

4 2 4

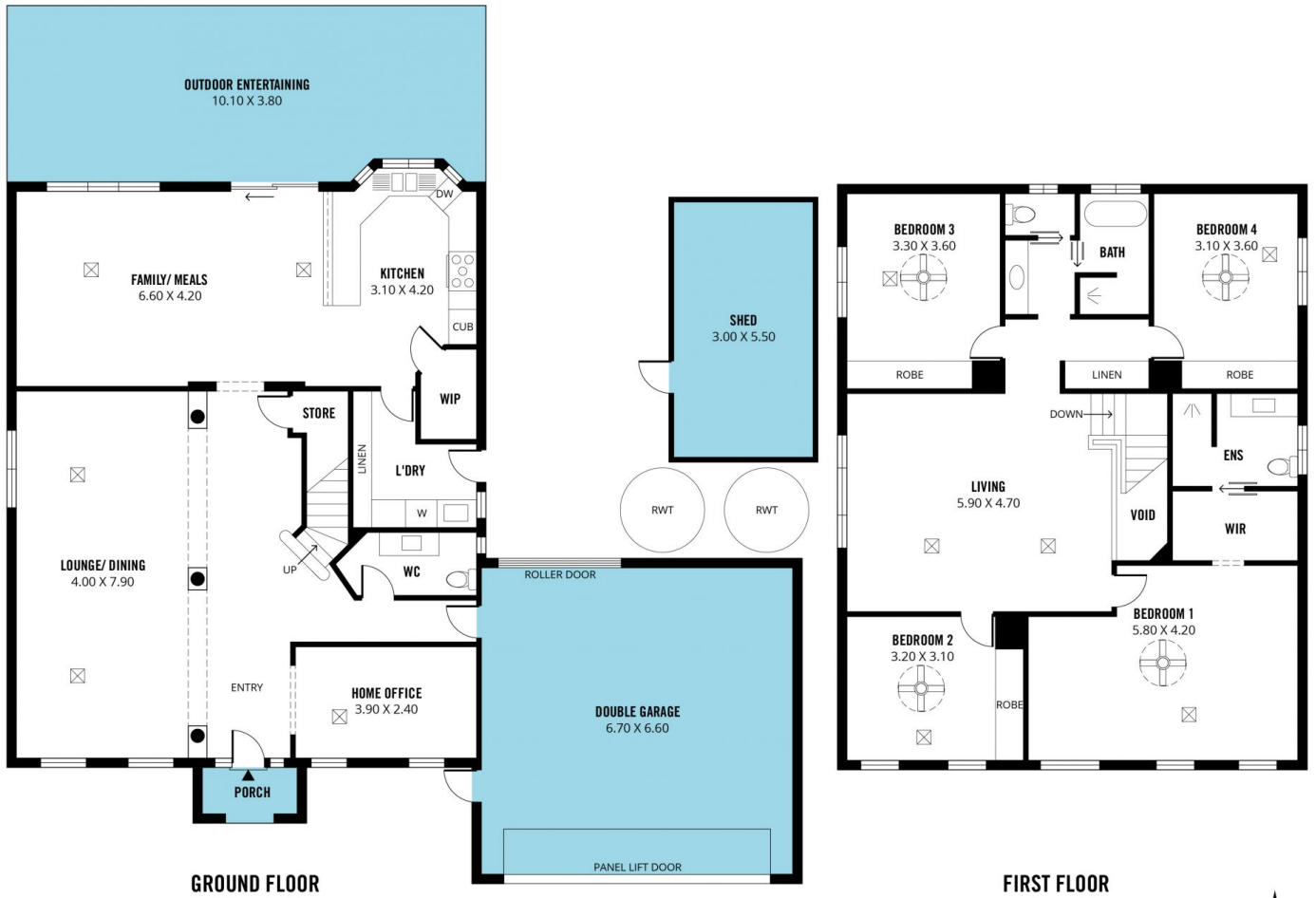
Contact Pete Fallon for viewing times.

Located in the highly sought after suburb of Sheidow Park, this truly impressive family home is sure to please. Only moments from Hallett Cove Shopping Centre for all your shopping needs and easy access to Marion Shopping Centre. The beautiful conservations parks at Hallett Cove are only a short drive away, there are great quality schools such as St Martin's, Woodend Primary and Hallett Cove R-12 and with Ocean Boulevard taking you easily towards the city, this location is ideal for so many reasons!

As you approach the home you will appreciate the grandness of its street appeal, it is truly stunning! Entering the home you will love the huge open entrance, with wide

[For full version visit the website](https://www.magain.com.au/property/56-woodend-road-sheidow-park-sa/8426802)

Type : House
Building Size : 31 sqm
Land Size : 626 sqm
View : <https://www.magain.com.au/property/56-woodend-road-sheidow-park-sa/8426802>



Scale in metres. This drawing is for illustration purposes only. All measurements are approximate and details intended to be relied upon should be independently verified.

Produced by The Fotobase Group