




# MAGAIN



16 Shaun Crescent MITCHELL PARK SA

3  1  1 

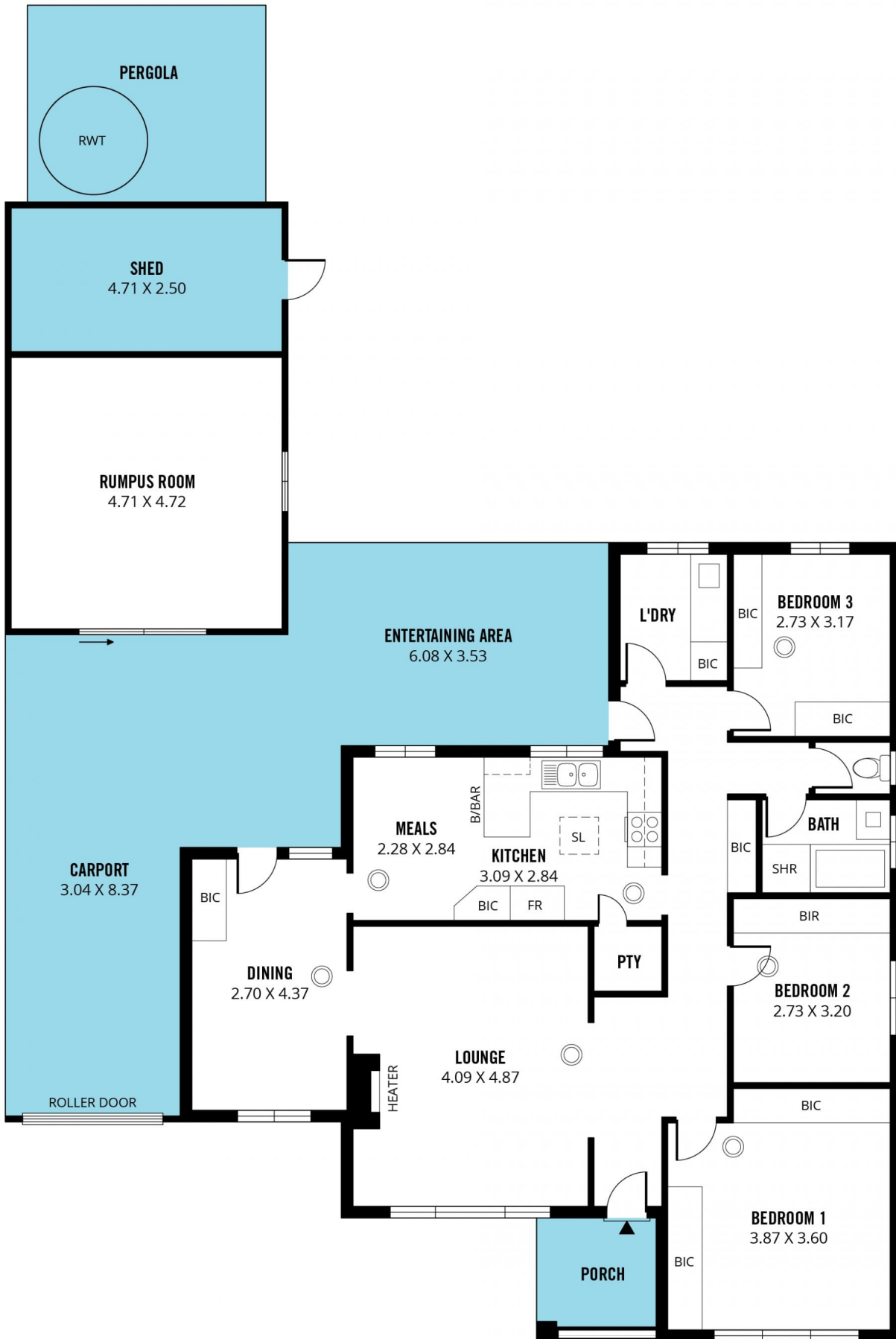
Please contact Mike Dobbin & Zoe Ball for inspection details.

This original solid brick home sits on a 577sqm flat block, tucked down a quiet cul-de-sac in the Heart of Mitchell Park. There is an updated kitchen, beautiful polished floor boards and drive through access to a big shed that has been converted into a teenage retreat. This home is perfect for those looking to enter the market, or even a savvy investor looking for a home in this popular location close by to shops, schools, Flinders Uni and transport to the city or Flinders hospital.

The functional floor plan offers three bedrooms, mast with polished floors and dual built in robes, while the other two

[For full version visit the website](https://www.magain.com.au/property/16-shaun-crescent-mitchell-park-sa/8426805)

**Type** : House  
**Building Size** : 14 sqm  
**Land Size** : 577 sqm  
**View** : <https://www.magain.com.au/property/16-shaun-crescent-mitchell-park-sa/8426805>



Scale in metres. This drawing is for illustration purposes only. All measurements are approximate and details intended to be relied upon should be independently verified.

Produced by **The Fotobase Group**