

MAGAIN



6/34 Partridge Street GLENELG SA

2 1 1

Contact Pete Fallon for viewing times.

Located in the heart of Glenelg and neighboring onto the beautiful grounds of Partridge House, this unit is sure to fly. Only a minute walk to the cosmopolitan lifestyle of Jetty Road with all the shopping and cafes around, and the beautiful beaches that Holdfast Shores have to offer are on your doorstep. The tram makes it easy to travel into the CBD and there are great quality schools such as Sacred Heart, St Peter's Woodlands and Glenelg Primary School. There really is so much to love about this beach lifestyle.

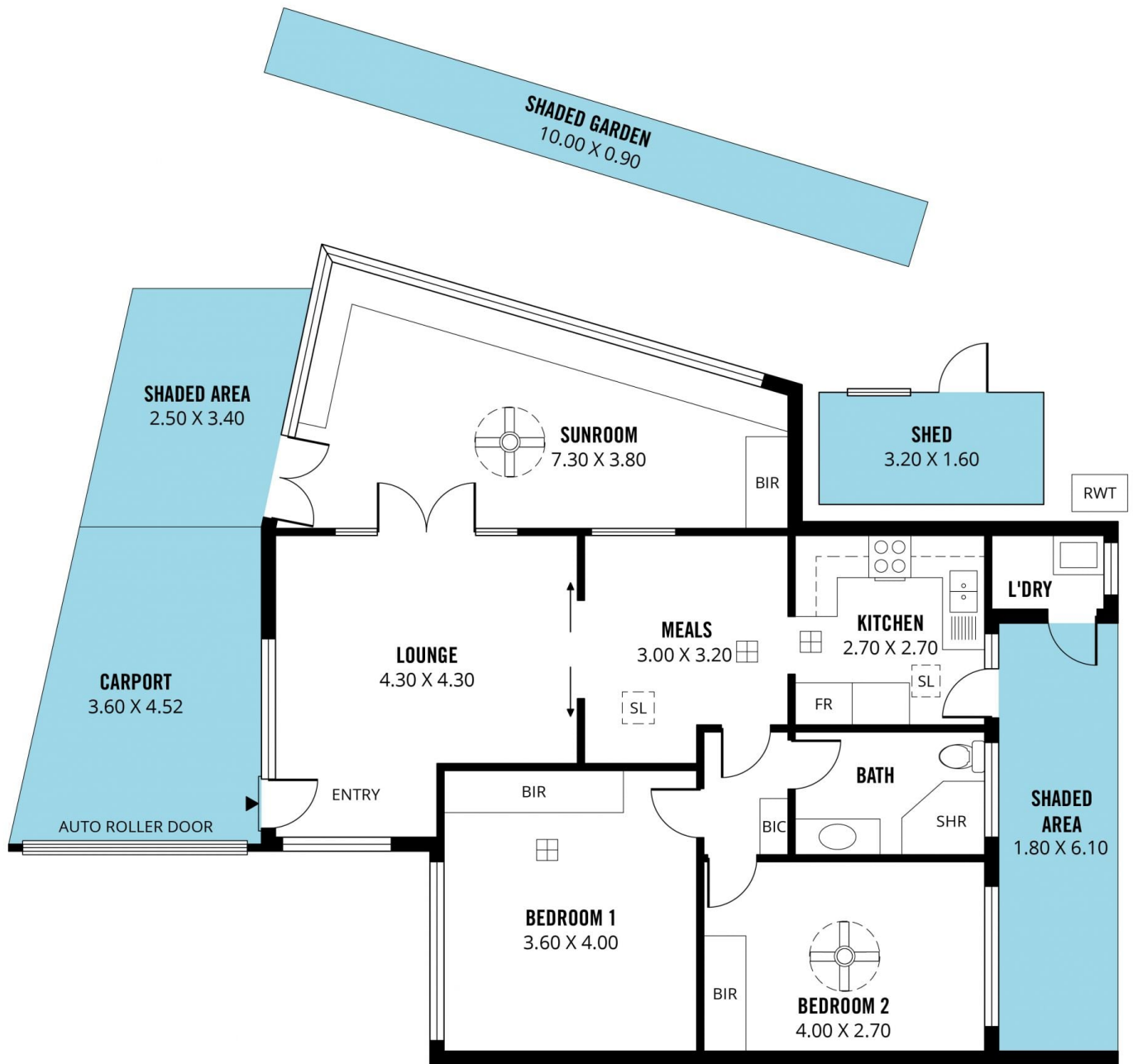
As you approach the small group of units you will appreciate the care taken of the common areas, with it's beautifully manicured lawns and gardens. Being located at

Type : House
Price : \$ 645,000
Building Size : 9 sqm
Land Size : 250 sqm
View : <https://www.magain.com.au/property/634-partridge-street-glenelg-sa/8426810>

[For full version visit the website](https://www.magain.com.au)

<https://www.magain.com.au>
Magain Real Estate

52 Hillier Road Morphett Vale SA
08 8366 2292



Scale in metres. This drawing is for illustration purposes only. All measurements are approximate and details intended to be relied upon should be independently verified.

Produced by **The Fotobase Group**