

# MAGAIN



77B Gray Street PLYMPTON SA

3  2  2 

Contact Pete Fallon for viewing times.

Located in the highly desirable suburb of Plympton, nestled perfectly between the City and Glenelg, this brand new family home with double garage is sure to impress. Close to multiple parks, including the newly redone Weigall Oval Reserve, close to the tram taking you either to Adelaide CBD or Jetty Road Glenelg, and great schooling options available such as Plympton International College, this location is so very convenient.

As you approach the property you will notice the quality of the build, from the aggregated concrete driveway to the security system and panel lift door to the double garage. Entering the home you are greeted with a beautiful timber

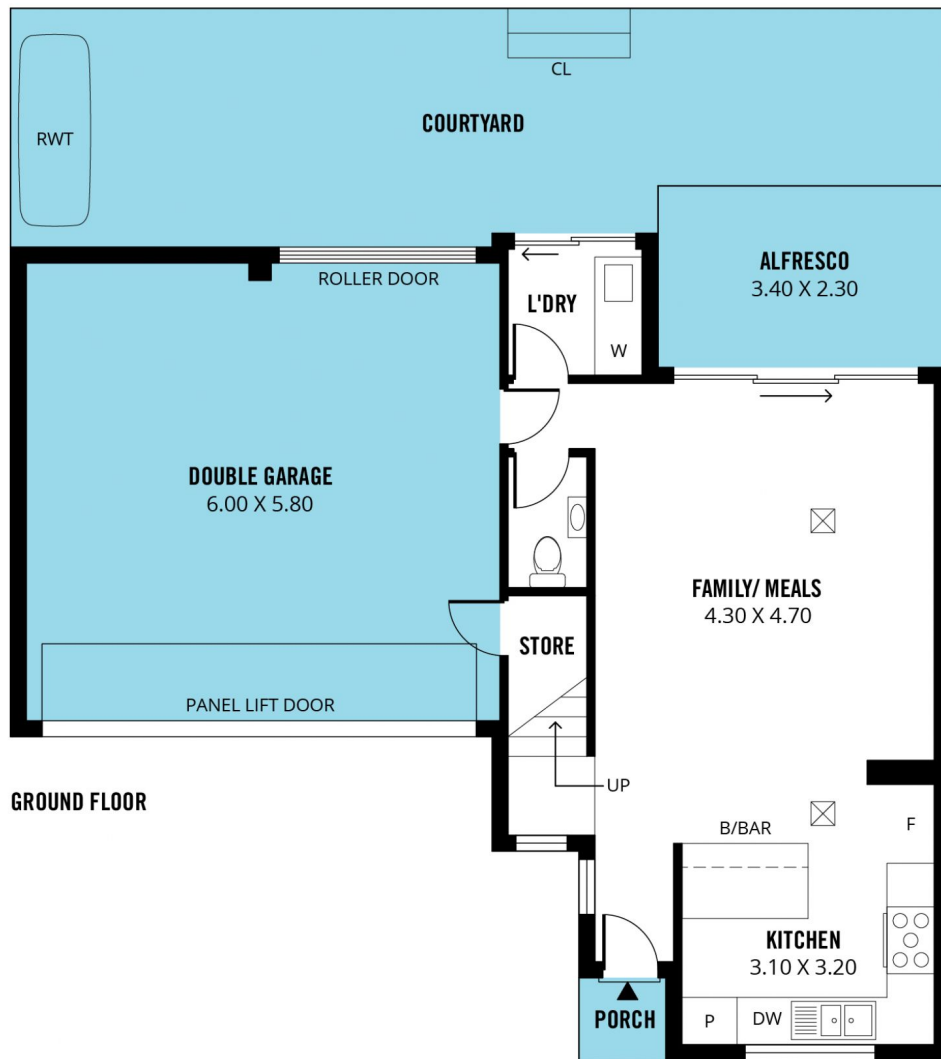
**Type** : House

**View** : <https://www.magain.com.au/property/77b-gray-street-plympton-sa/8426825>

[For full version visit the website](https://www.magain.com.au)

<https://www.magain.com.au>  
Magain Real Estate

52 Hillier Road Morphett Vale SA  
08 8366 2292



Scale in metres. This drawing is for illustration purposes only. All measurements are approximate and details intended to be relied upon should be independently verified. Produced by **The Fotobase Group**