

MAGAIN



39B Shearer Avenue SEACOMBE GARDENS SA

3 2 4

Contact Pete Fallon for viewing times.

Located in the highly desired area of Seacombe Gardens, 14kms from the Adelaide CBD and 3kms from the iconic Jetty Road, Brighton precinct. This stunning near new home is ideally located between the city and South Australia's stunning beaches whilst conveniently located in walking distance to Marion Shopping Centre.

As you enter the home you will love the wide hallway, making the home feel light and bright. The timber flooring takes you through to the large open planned living area. The kitchen overlooks the living area and has an abundance of cupboards, stone bench tops, and all the essential appliances including gas cooktop and

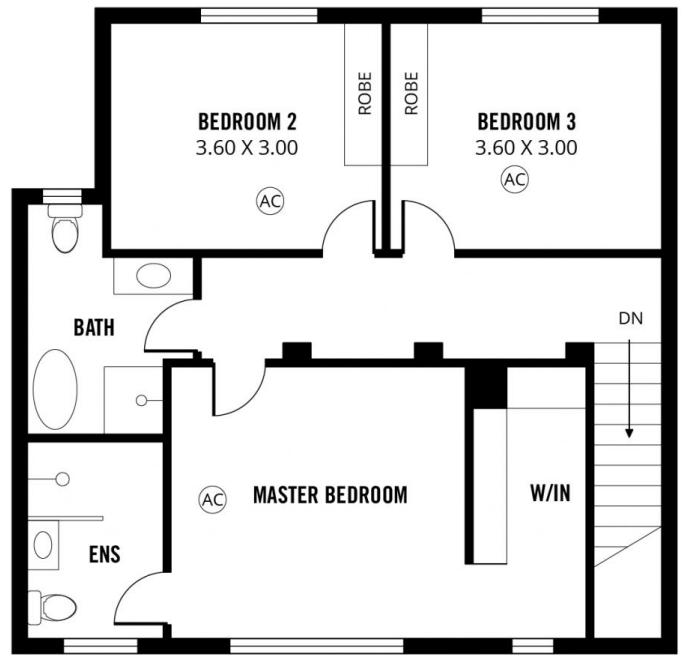
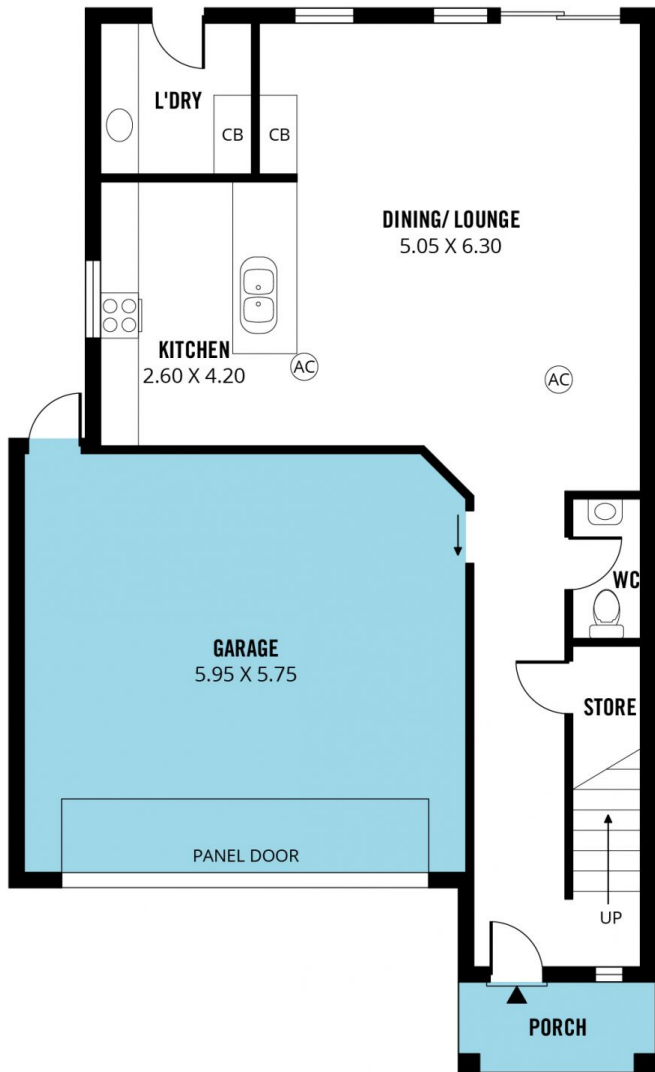
Type : House

View : <https://www.magain.com.au/property/39b-shearer-avenue-seacombe-gardens-sa/8426837>

[For full version visit the website](https://www.magain.com.au)

<https://www.magain.com.au>
Magain Real Estate

52 Hillier Road Morphett Vale SA
08 8366 2292



Scale in metres. This drawing is for illustration purposes only. All measurements are approximate and details intended to be relied upon should be independently verified.

Produced by **The Fotobase Group**