

MAGAIN



2/8 Nairne Court NOARLUNGA DOWNS SA

2 1 2

Contact Pete Fallon for viewing times.

Located in a quiet cul-de-sac and backing onto a huge reserve, this cute homette is sure to please those looking to enter the market or downsize. Close to colonnades shopping centre, the southern expressway taking you into the CBD or down to McLaren Vale, the Onkaparinga National Park only a few steps away or the glorious southern coastline only a 5 minute drive, this location is sure to please.

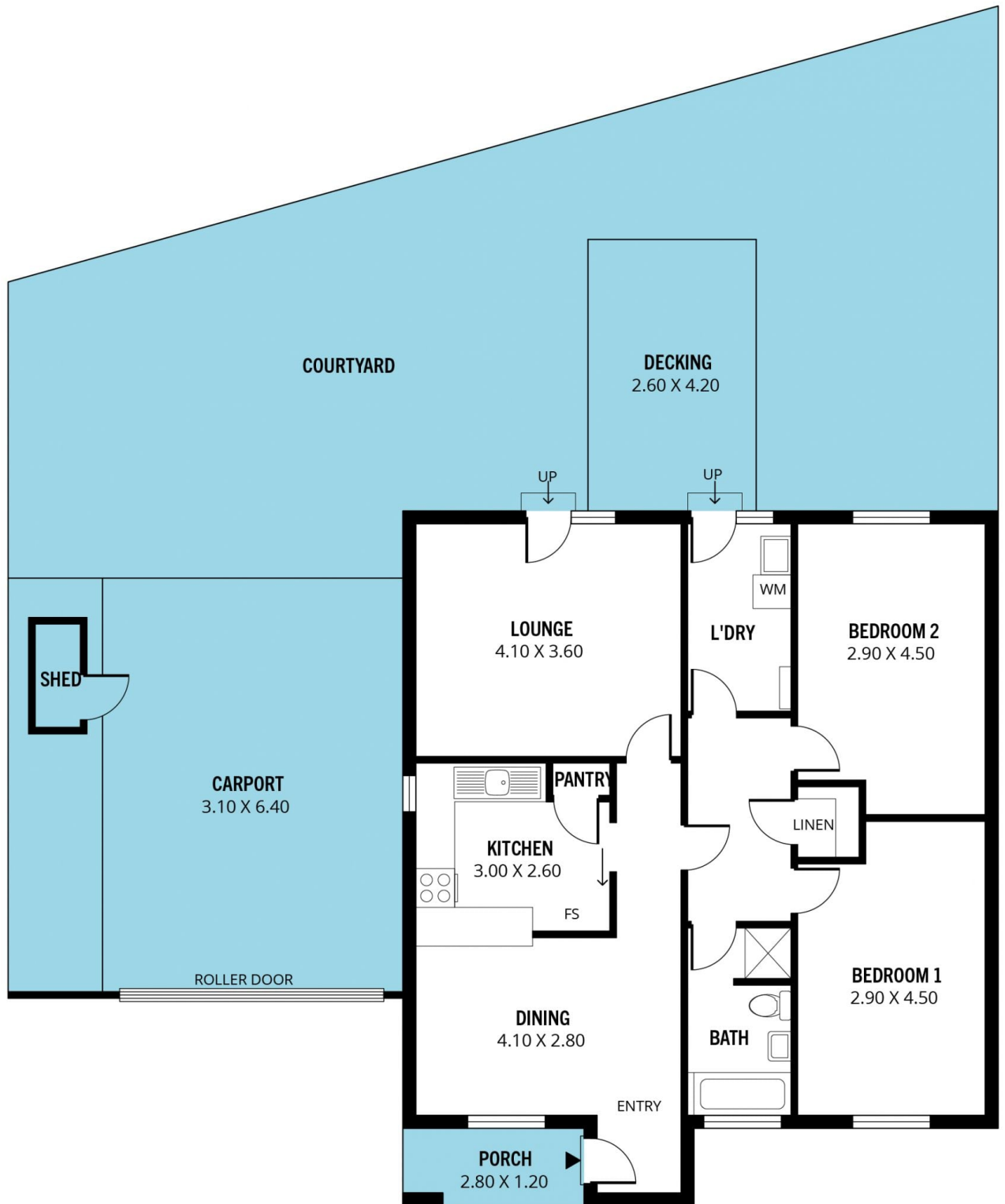
As you enter the group you will appreciate how quiet and tranquil it feels. Entering the home you are greeted with a good sized dining space or sitting area. The kitchen has ample bench space and cupboard space. The living room

Type : House
Building Size : 8 sqm
Land Size : 266 sqm
View : <https://www.magain.com.au/property/28-nairne-court-noarlunga-downs-sa/8426870>

[For full version visit the website](https://www.magain.com.au)

<https://www.magain.com.au>
Magain Real Estate

52 Hillier Road Morphett Vale SA
08 8366 2292



Scale in metres. This drawing is for illustration purposes only. All measurements are approximate and details intended to be relied upon should be independently verified.

Produced by **The Fotobase Group**