

MAGAIN



30A Sandery Avenue SEACOMBE GARDENS SA

3  **1**  **2** 

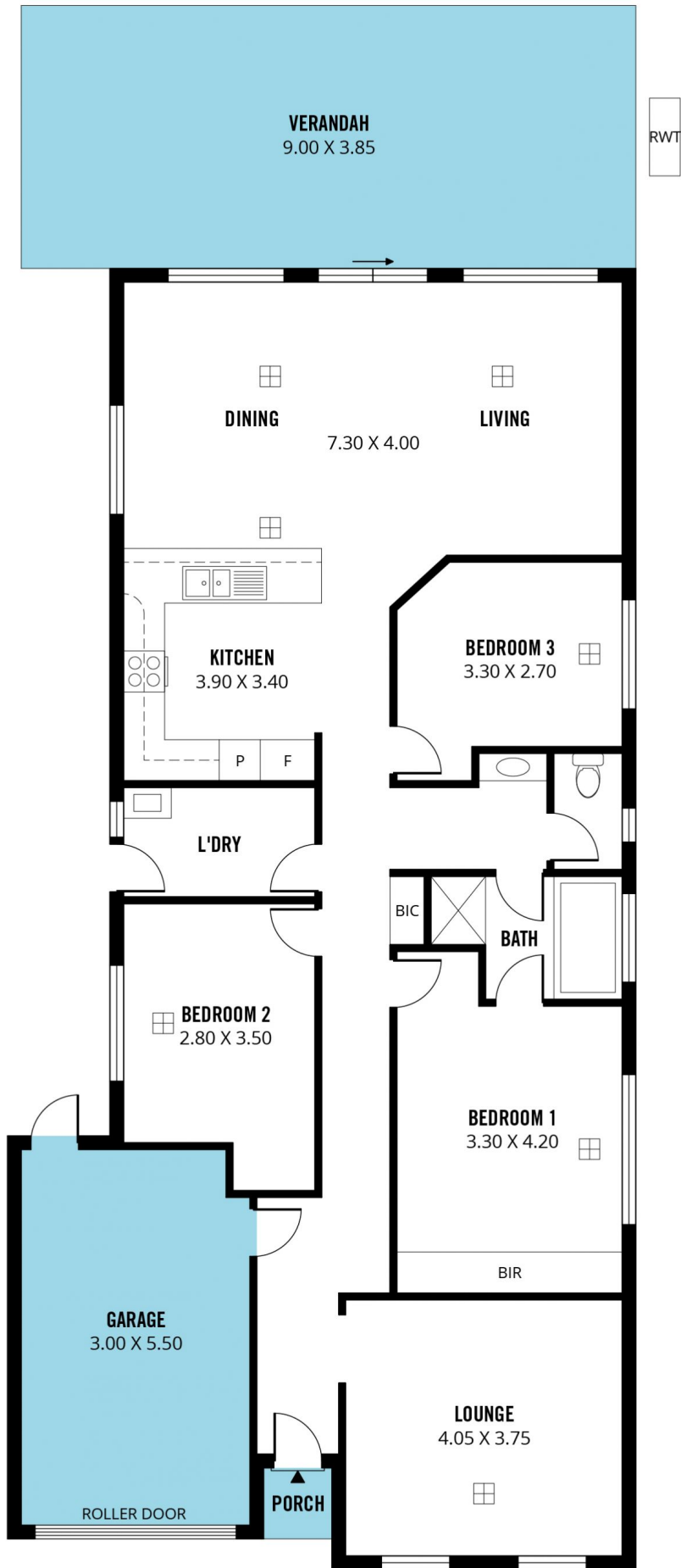
Contact Pete Fallon for viewing times.

Have you been looking for that easy to maintain, yet spacious home? Enough room to spread out but close to everything? Look no further, this home has you covered! Four doors down is the beautiful Sandery Reserve with kids playground, tennis courts, basketball courts and cricket nets. Only a stones throw from Westfield Marion Shopping Centre, you can leave the car at home and venture on out. Public transport taking you to the city, university & hospital, or Glenelg are right here too, not to mention the fantastic schools and its close proximity to Jetty Road at Brighton, there is so much to love about this location!

As you approach the home you will appreciate the care

[For full version visit the website](https://www.magain.com.au/property/30-a-sandery-avenue-seacombe-gardens-sa/8426873)

Type : House
Building Size : 15 sqm
Land Size : 375 sqm
View : <https://www.magain.com.au/property/30-a-sandery-avenue-seacombe-gardens-sa/8426873>



Scale in metres. This drawing is for illustration purposes only. All measurements are approximate and details intended to be relied upon should be independently verified.

Produced by **The Fotobase Group**