

MAGAIN



22 Calum Grove SEACOMBE HEIGHTS SA

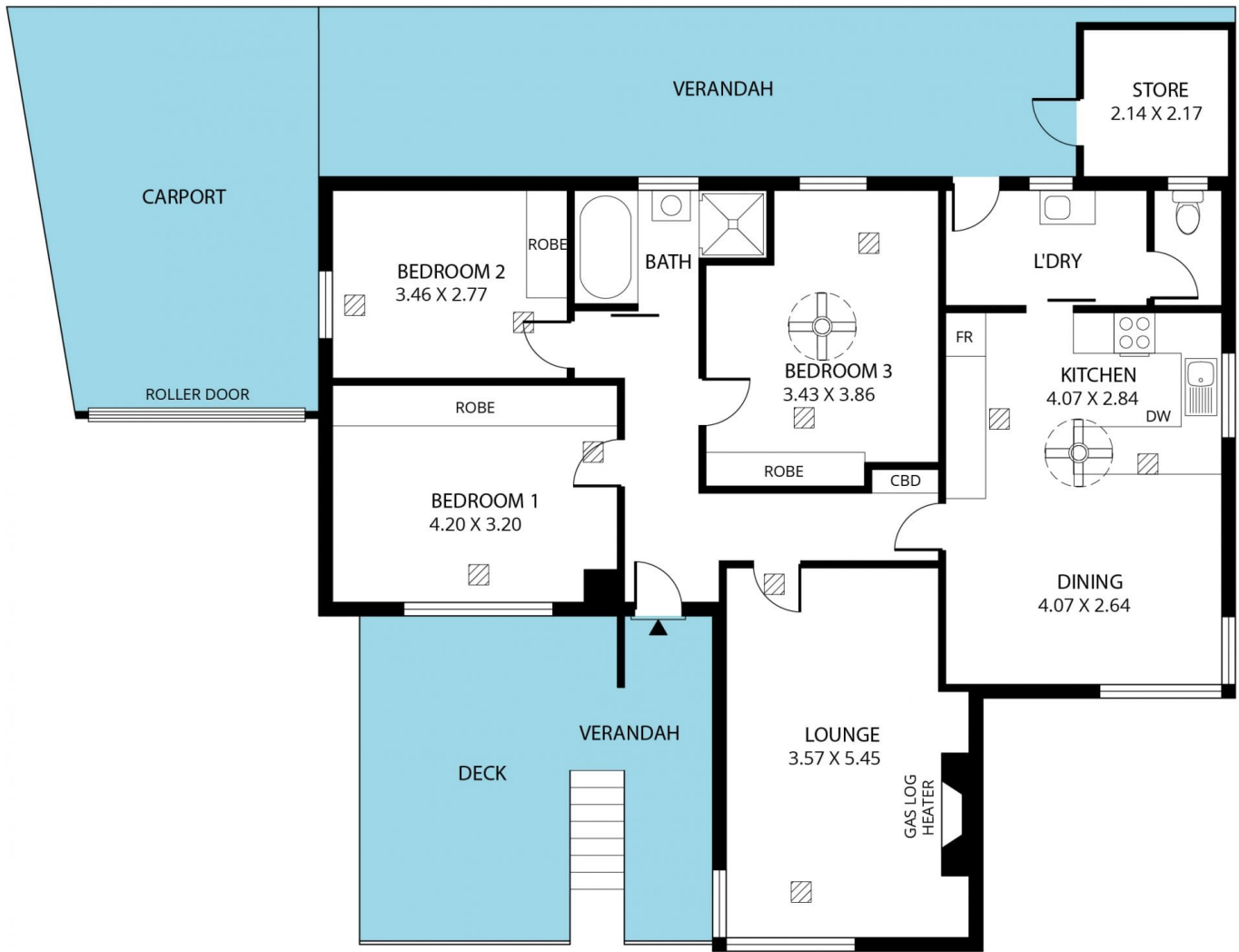
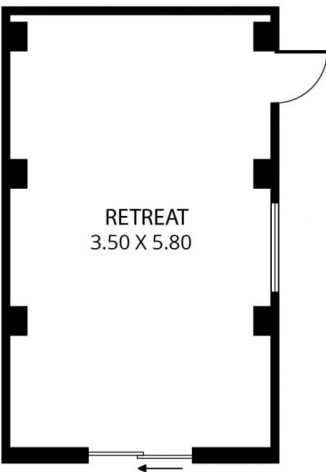
3 1 2

Elevated on the high side Calum Grove to capture a 180-degree perspective of the CBD and the sea, this home is sure to make a statement! Literally just opposite Seaview High School, leaving uninterrupted views, close to Marion Shopping Centre, Flinders Uni & Hospital and only a 5 minute drive to Brighton Beach, this location has it all.

Type : House
Land Size : 800 sqm
View : <https://www.magain.com.au/property/22-calum-grove-seacombe-heights-sa/8426881>

Approaching the home you will find the deck set up at the front, the perfect place to entertain family and friends while taking in those beautiful sun-sets. As you enter you will love the polished pine floors throughout. There are three bedrooms, all of great size and all with built-in wardrobes. The lounge is located at the front of the home and is perfectly positioned to take in the glorious views. The kitchen has been updated and features a 900mm Smeg

[For full version visit the website](https://www.magain.com.au)



Scale in metres. This drawing is for illustration purposes only. All measurements are approximate and details intended to be relied upon should be independently verified.

Produced by **The Fotobase Group**