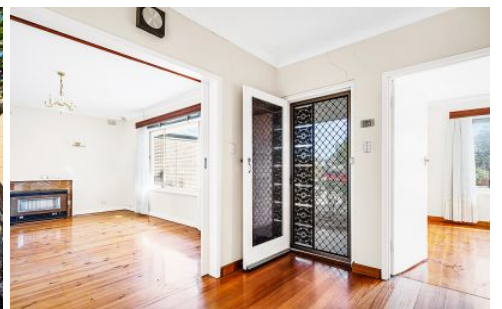


# MAGAIN



7 Renown Avenue CLOVELLY PARK SA

3  1  5 

Please contact Robbie Leigh to discuss further...

This 1966 family home is situated on a generous allotment of 800sqm (approx) with frontage of 17.07m (approx.).

It is located in the sought after and developing suburb of Clovelly Park. A fantastic opportunity for those wanting a family home on large block, savvy developers or keen renovators. This property has three bedrooms, 1 bathroom, room for 3 undercover parking, workshop, and in good presentation.

Look forward to seeing you at the open soon as this won't be on the market for long!

Highlights:

[For full version visit the website](https://www.magain.com.au)

**Type** : House  
**Building Size** : 11 sqm  
**Land Size** : 800 sqm  
**View** : <https://www.magain.com.au/property/7-renown-avenue-clovelly-park-sa/8426883>



**Robbie Leigh**  
08 8366 2292