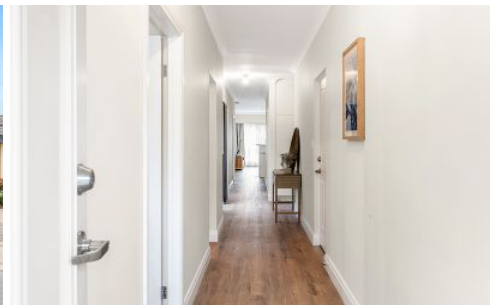


# MAGAIN



## 13G White Crescent SEACOMBE GARDENS SA

3  1  2 

Contact Pete Fallon for viewing times.

Located in the highly sought after suburb of Seacombe Gardens, only a short walk to Seaview High School and other quality primary schools, close to Westfield Marion Shopping Centre, Flinders Uni & Flinders Hospital and the beautiful Brighton Beach only a short drive, this location has it all!

As you approach this home you will appreciate the street appeal, with the well manicured lawns and neatly hedged trees, giving the property a sense of privacy. Entering the home you will love the freshly laid floorboards throughout the halls and living areas. The master bedroom greets you on your left, featuring both a walk in wardrobe and built in

**Type** : House  
**Building Size** : 15 sqm  
**Land Size** : 350 sqm  
**View** : <https://www.magain.com.au/property/13g-white-crescent-seacombe-gardens-sa/8426887>

[For full version visit the website](https://www.magain.com.au)

