




MAGAIN



1/26 Bowker Street SOMERTON PARK SA

2  1  1 

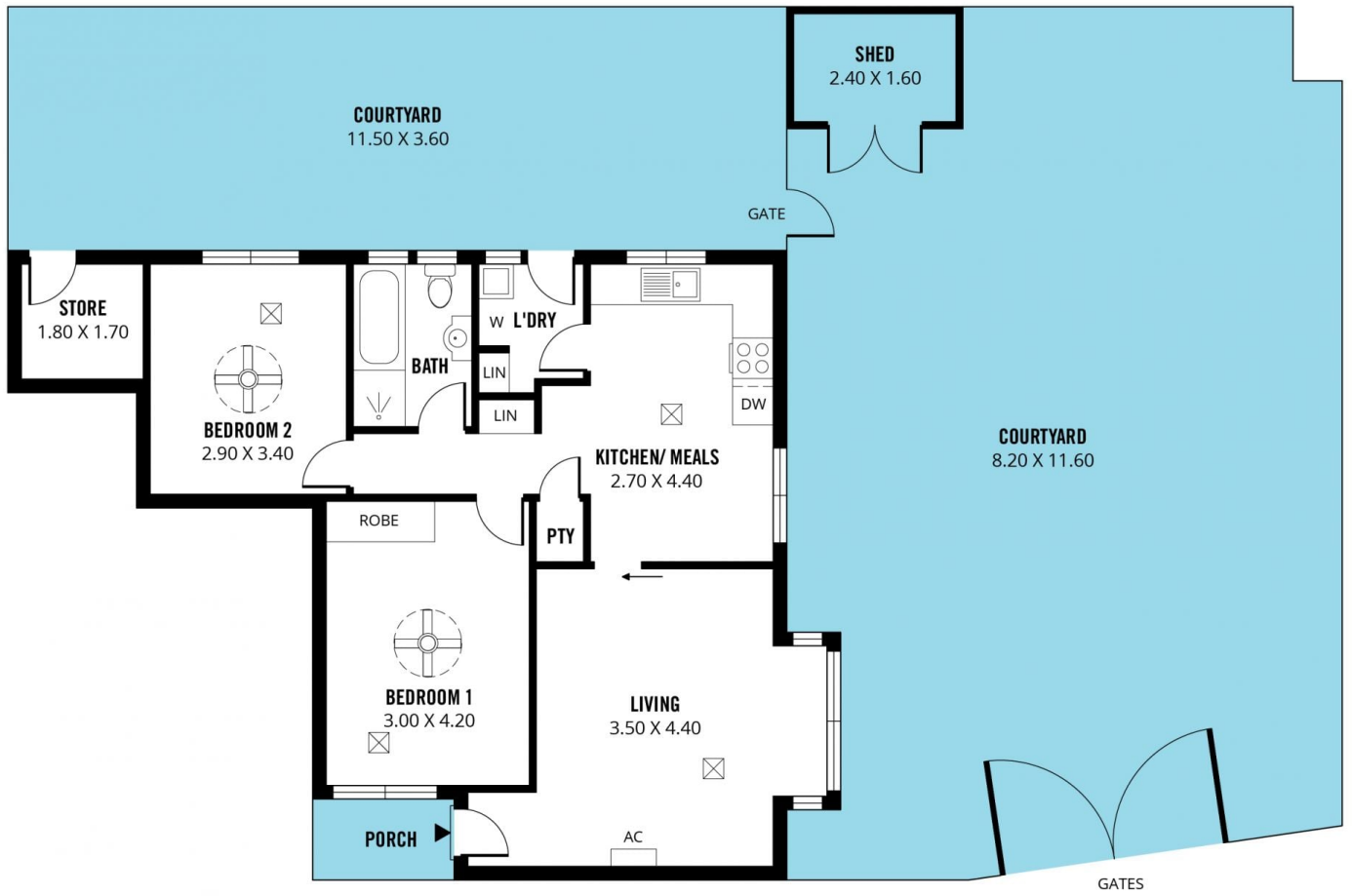
Contact Pete Fallon for viewing times.

Located in the highly desirable suburb of Somerton Park, right opposite the hugely popular Paringa Park Primary School, this nicely updated unit is sure to delight! So close to great schools such as Paringa Park, Sacred Heart and Brighton Secondary, Jetty Road Glenelg only a few minutes away with tram going directly to the city and the beautiful Holdfast Shores a 20 minute walk, this location is going to suit buyers from all walks of life.

As you enter the property you will love the beautifully polished timber floors throughout. The large lounge room greets you on entry, freshly painted and spacious. The lounge flows through to the updated kitchen and dining

[For full version visit the website](https://www.magain.com.au/property/12-6-bowker-street-somerton-park-sa/8426888)

Type : House
Building Size : 8 sqm
View : <https://www.magain.com.au/property/12-6-bowker-street-somerton-park-sa/8426888>



Scale in metres. This drawing is for illustration purposes only. All measurements are approximate and details intended to be relied upon should be independently verified.

Produced by **The Fotobase Group**