

MAGAIN



97 Emmerson Drive MORPHETT VALE SA

3  2  2 

Contact Pete Fallon for viewing times.

Located on the cusp of Woodcroft and within walking distance to the Woodcroft Shops, hotel and Woodcroft College, this family home is sure to fly. With the shopping center providing public transport straight to the CBD, the schools and shops close by and only a short drive to the glorious southern coastline, this location is hard to beat.

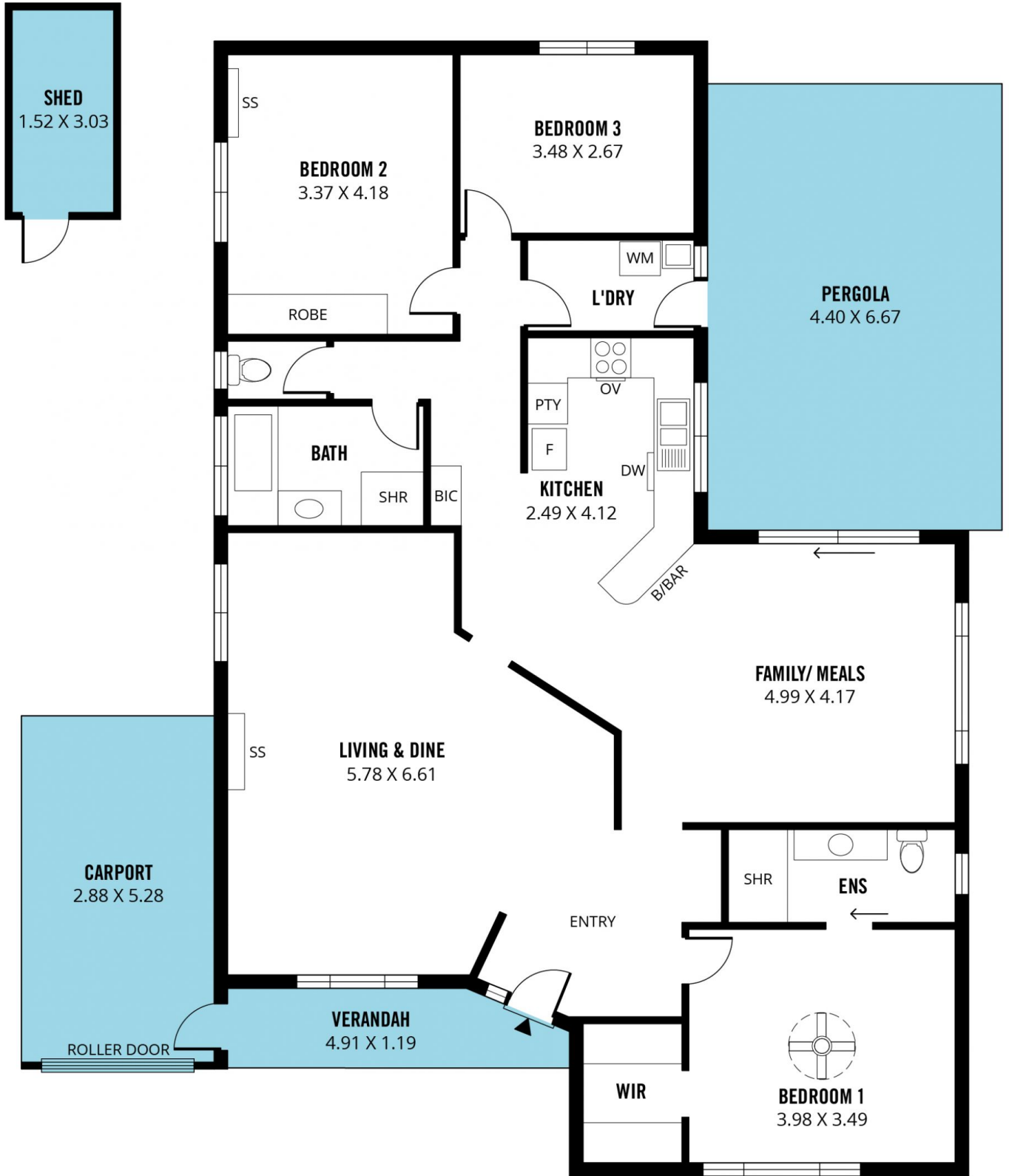
As you enter the estate you will appreciate the house proud nature of the street - and 97 Emmerson Drive is no exception, with it's fresh lawn, manicured gardens and freshly painted driveway. Entering the home you are greeted with a huge lounge room, a great place to kick your shoes off after a long day at work. The dining room flows

Type : House
Building Size : 17 sqm
Land Size : 538 sqm
View : <https://www.magain.com.au/property/97-emmerson-drive-morphett-vale-sa/8426898>

[For full version visit the website](https://www.magain.com.au)

<https://www.magain.com.au>
Magain Real Estate

52 Hillier Road Morphett Vale SA
08 8366 2292



Scale in metres. This drawing is for illustration purposes only. All measurements are approximate and details intended to be relied upon should be independently verified. Produced by **The Fotobase Group**