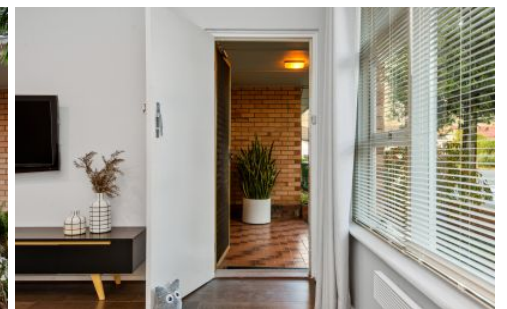


MAGAIN



2/2A Lewis Street BROOKLYN PARK SA

2  1  1 

Contact Pete Fallon for viewing times

If you're looking to enter the market, downsize or expand your rental portfolio, look no further! Located in the highly desirable suburb of Brooklyn Park, only a short drive to the CBD, so close to the airport, and Glenelg just down the road, this location is sure to suit.

As you approach this small group of 5 units, you will appreciate the care taken by the owners of the group. Entering the home you are greeted with a beautifully styled and presented living room. The kitchen has been tastefully updated with plenty of bench space and cupboard storage, and finished with stone benches, gas cooktop and dishwasher. The two bedrooms are both a fantastic size,

[For full version visit the website](https://www.magain.com.au/property/22-a-lewis-street-brooklyn-park-sa/8426905)

Type : Unit
Building Size : 7 sqm
Land Size : 207 sqm
View : <https://www.magain.com.au/property/22-a-lewis-street-brooklyn-park-sa/8426905>

