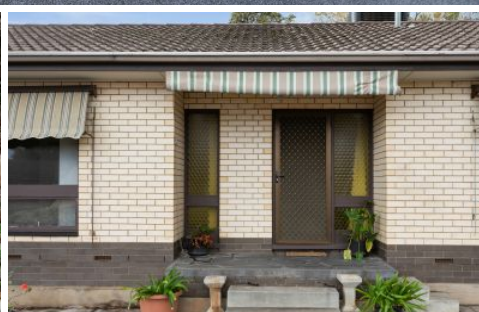


# MAGAIN



4 Ellis Street PORT NOARLUNGA SA

3  1  4 

Please contact Robbie Leigh to discuss further.

Welcome to 4 Ellis Street Port Noarlunga!

Sitting on 785m<sup>2</sup> (approx 22.9m x 34.3m) is this prized address and affordable price tag offering you easy access to stunning local beaches, Onkaparinga River & National Park, a picturesque village with a variety of local restaurants - whilst also being only a couple of minutes from Noarlunga Centre, train station and other conveniences.

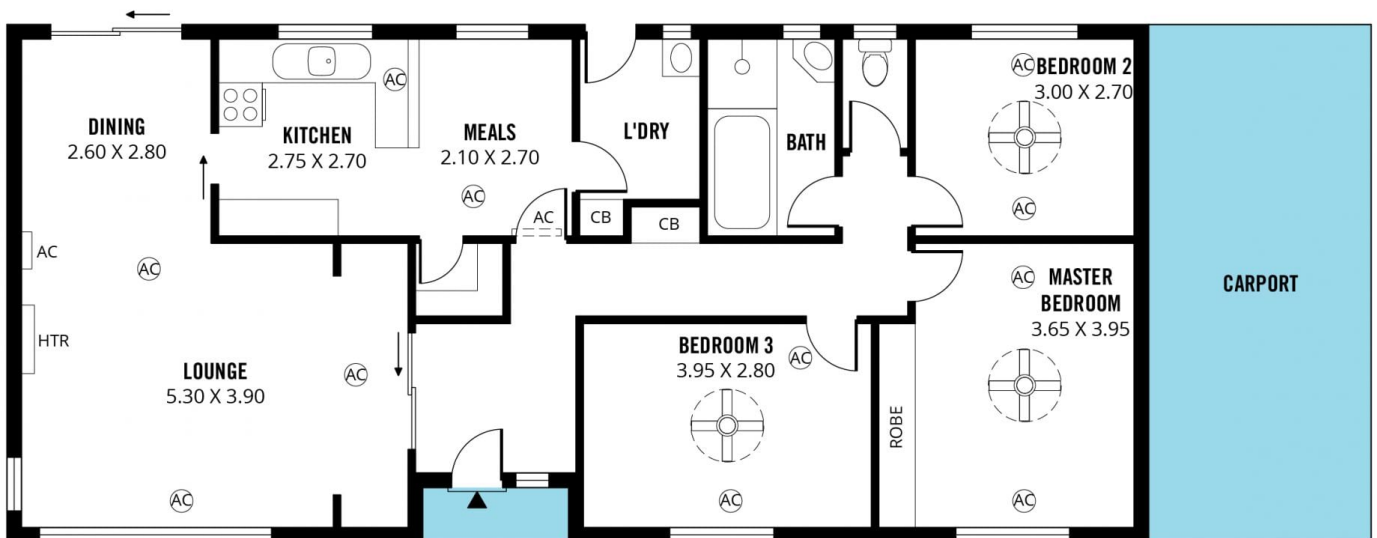
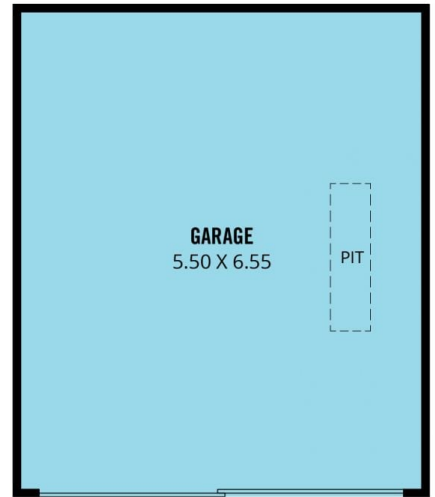
This home has plenty of room for kids and pets to play and ideal for first home buyers, investors or those looking to downsize without downgrading on space or lifestyle. Be

[For full version visit the website](https://www.magain.com.au/property/4-ellis-street-port-noarlunga-sa/8426910)

**Type** : House  
**Land Size** : 780 sqm  
**View** : <https://www.magain.com.au/property/4-ellis-street-port-noarlunga-sa/8426910>



**Robbie Leigh**  
08 8366 2292



Scale in metres. This drawing is for illustration purposes only. All measurements are approximate and details intended to be relied upon should be independently verified.

Produced by **The Fotobase Group**