

MAGAIN



15 Howard Street Dover Gardens SA

3  1  3 

Contact Cain Dover for viewing times.

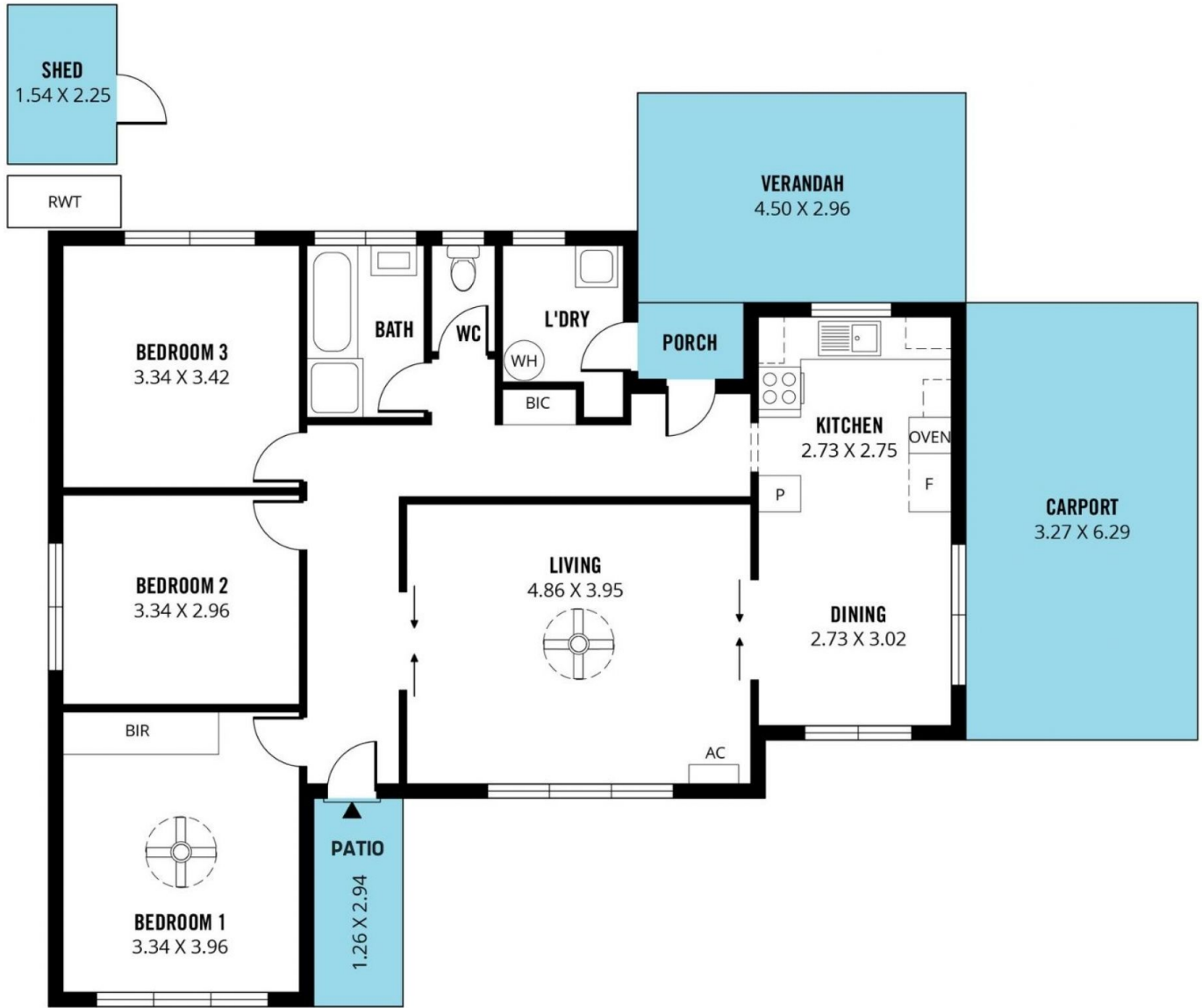
As soon as you arrive at 15 Howard Street, you will appreciate the quiet, family friendly street and large 427sqm corner block, not only do you have an ideal location close to Westfield Marion shopping centre, swimming centre, Brighton and Seacliff beaches, and sought after schools, Flinders University and Medical Centre, but you are also just a moments walk to local winery, Patritti and local parks.

Everything that you could want at your fingertips to grow into the sought after Dover Gardens neighbourhood.

In addition to having the ideal location you also have ample

[For full version visit the website](https://www.magain.com.au/property/15-howard-street-dover-gardens-sa/8426990)

Type : House
Price : \$ 690,000
Building Size : 111 sqm
Land Size : 427 sqm
View : <https://www.magain.com.au/property/15-howard-street-dover-gardens-sa/8426990>



Scale in metres. This drawing is for illustration purposes only. All measurements are approximate and details intended to be relied upon should be independently verified.

Produced by **The Fotobase Group**