

# MAGAIN



## 15 Mawson Circuit Woodcroft SA

4 2 2

Please call Craig Thomson for more information.

Located in the vicinity to Woodcroft primary school and Woodcroft Plaza shopping centre this family home is ready for the next family to enjoy.

This home features 4 good sized bedrooms with master complete with ensuite, 2 living areas and plenty of room outside for the family to enjoy.

The kitchen is the real hub of this home and features large island bench that overlooks the large undercover outdoor entertaining area which including the large pitched pergola.

**Type** : House  
**Price** : \$ 685,000  
**Building Size** : 174 sqm  
**Land Size** : 602 sqm  
**View** : <https://www.magain.com.au/property/15-mawson-circuit-woodcroft-sa/8427009>

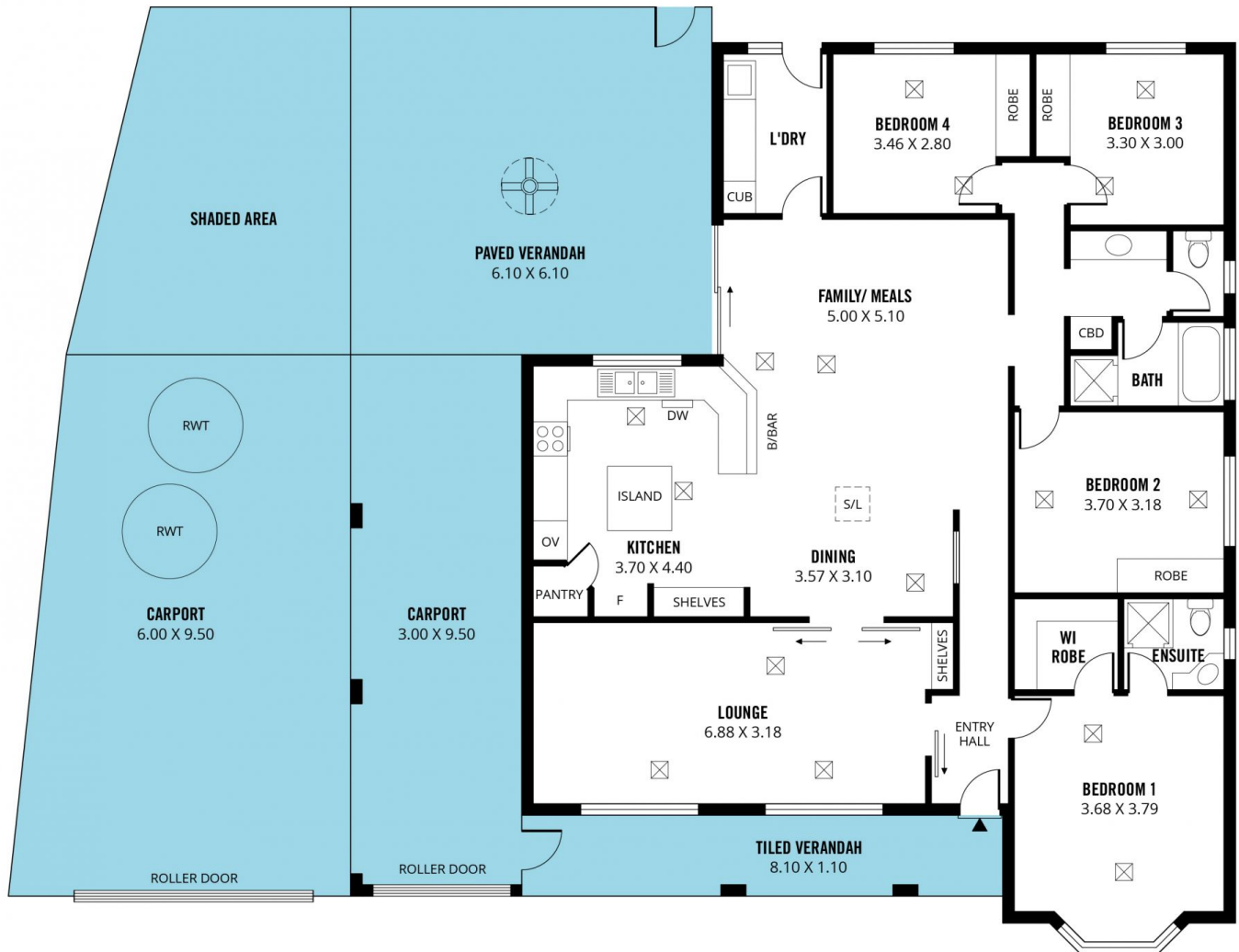
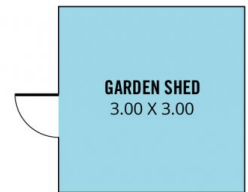


**Craig Thomson**  
08 8366 2292

[For full version visit the website](https://www.magain.com.au)

<https://www.magain.com.au>  
Magain Real Estate

52 Hillier Road Morphett Vale SA  
08 8366 2292



Scale in metres. This drawing is for illustration purposes only. All measurements are approximate and details intended to be relied upon should be independently verified.

Produced by **The Fotobase Group**