

# MAGAIN



15/13 Epstein Drive Morphett Vale SA

2  1  1 

Please call Craig Thomson for more information.

Ideally located securely at the back of the group this neat 2 bed is perfect for either those starting out, those looking to invest or for those that are looking to downsize.

This unit offers undercover parking out the front, recently upgraded modern flooring & carpet with a good sizable living area.

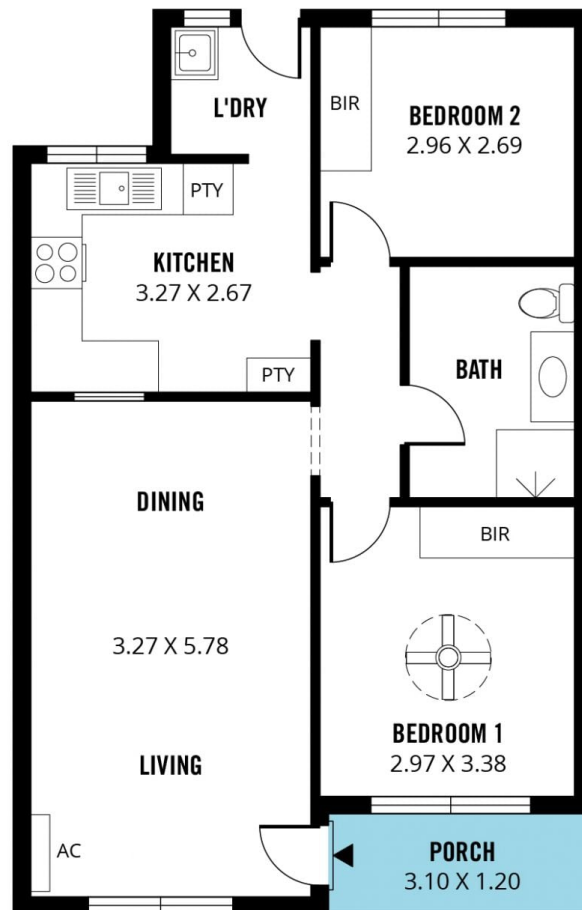
The kitchen is also generous, with plenty of storage and overlooks the private yard to the rear. You'll have the split system air conditioning located in the living area to enjoy which is supplemented with a ceiling fan to the master bedroom. All bedrooms have built in robes too!

[For full version visit the website](https://www.magain.com.au/property/1513-epstein-drive-morphett-vale-sa/8427022)

**Type** : Unit  
**Price** : \$ 332,000  
**View** : <https://www.magain.com.au/property/1513-epstein-drive-morphett-vale-sa/8427022>



**Craig Thomson**  
08 8366 2292



Scale in metres. This drawing is for illustration purposes only. All measurements are approximate and details intended to be relied upon should be independently verified.

Produced by **The Fotobase Group**