

MAGAIN



2/41 Malcolm Street Bedford Park SA

3 3 2

Please contact Robbie Leigh or Levi Sakkas to discuss this property further.

This beautiful Torrens Titled family home boasts 205m² of internal space, amazing location and family living versatility!

Deceptively large in floorplan as the home continues to open up with additional bathrooms and storage cupboards and areas.

With 3 Bedrooms, 3.5 Bathrooms, 3 Living Spaces and a flexible floorplan, including teenage retreat, room for guests or simply for those requiring generous family living.

Be quick as this won't be on the market for long...

Welcome Home to 2/41 Malcolm Street, Bedford Park!

Type : House
Price : \$ 720,000
Building Size : 203 sqm
Land Size : 559 sqm
View : <https://www.magain.com.au/property/24-1-malcolm-street-bedford-park-sa/8427042>

[For full version visit the website](https://www.magain.com.au)



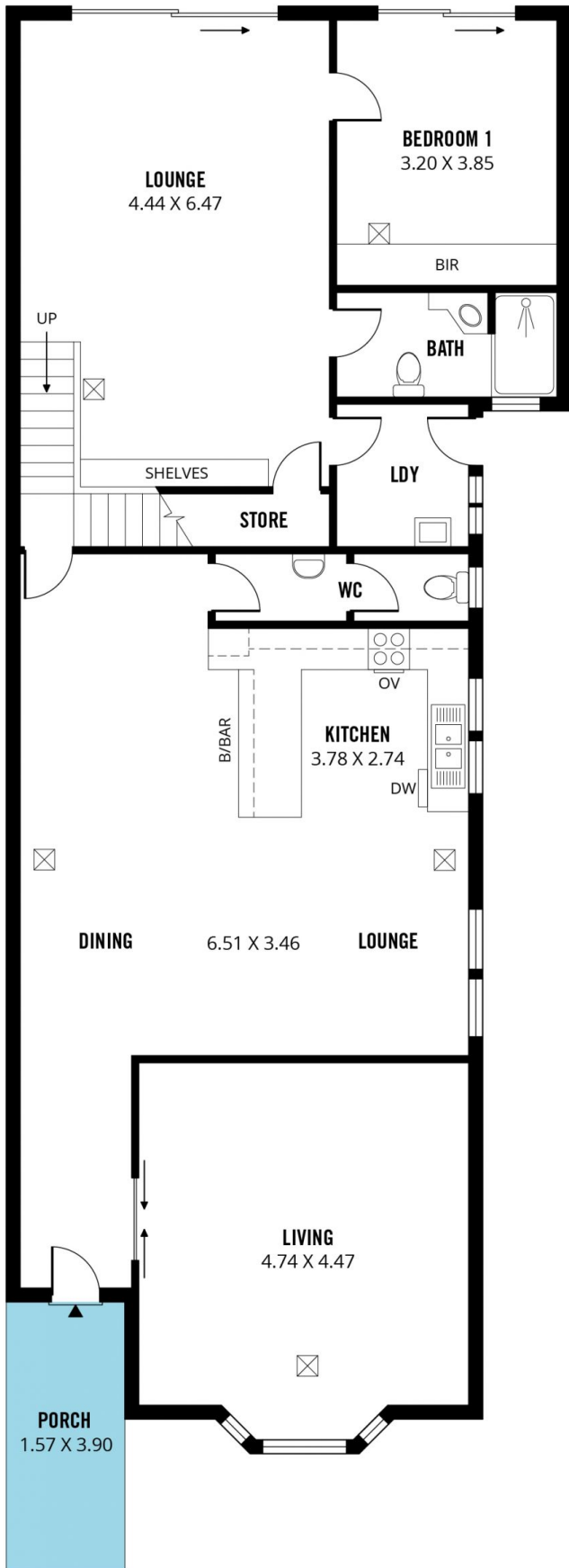
Robbie Leigh
08 8366 2292



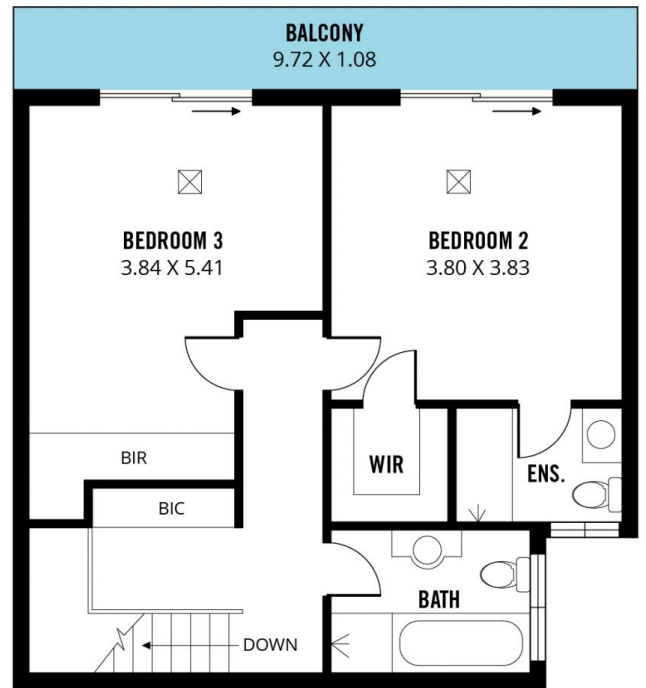
Levi Sakkas
08 8366 2292

<https://www.magain.com.au>
Magain Real Estate

52 Hillier Road Morphett Vale SA
08 8366 2292



LOWER LEVEL



UPPER LEVEL

