

# MAGAIN



2 Protea Street Morphett Vale SA

4  1  5 

Under Contract

Please contact Robbie Leigh or Levi Sakkas to discuss further...

If you're looking for an updated family home, close to schools, shops and transport on a generous 700m2 corner block... your search is over! Move in and enjoy 2 Protea Street Morphett Vale!

This beautiful family home boasts rendered frontage, four spacious bedrooms complete with Built In Robes, two large living spaces, outdoor undercover entertaining, double carport and shed with additional parking options. Enjoy your renovated bathroom and kitchen with spacious

[For full version visit the website](https://www.magain.com.au/property/2-protea-street-morphett-vale-sa/8427049)

**Type** : House  
**Price** : \$ 595,000  
**Land Size** : 700 sqm  
**View** : <https://www.magain.com.au/property/2-protea-street-morphett-vale-sa/8427049>



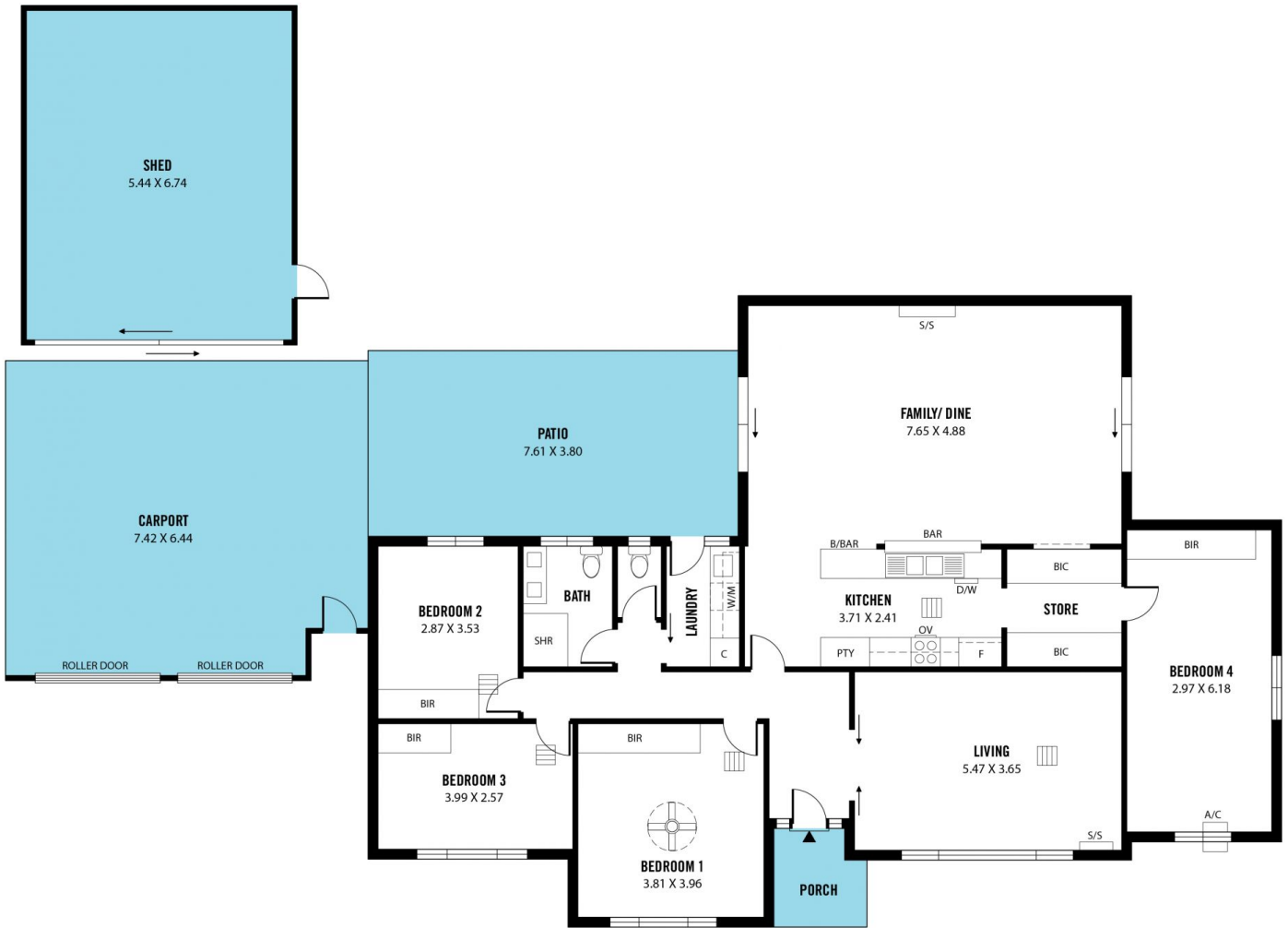
**Robbie Leigh**  
08 8366 2292



**Levi Sakkas**  
08 8366 2292

<https://www.magain.com.au>  
Magain Real Estate

52 Hillier Road Morphett Vale SA  
08 8366 2292



Scale in metres. This drawing is for illustration purposes only. All measurements are approximate and details intended to be relied upon should be independently verified.

Produced by The Fotobase Group