




# MAGAIN



5 Radcliffe Grove Christie Downs SA

4  1  2 

Contact Pete Fallon for viewing times.

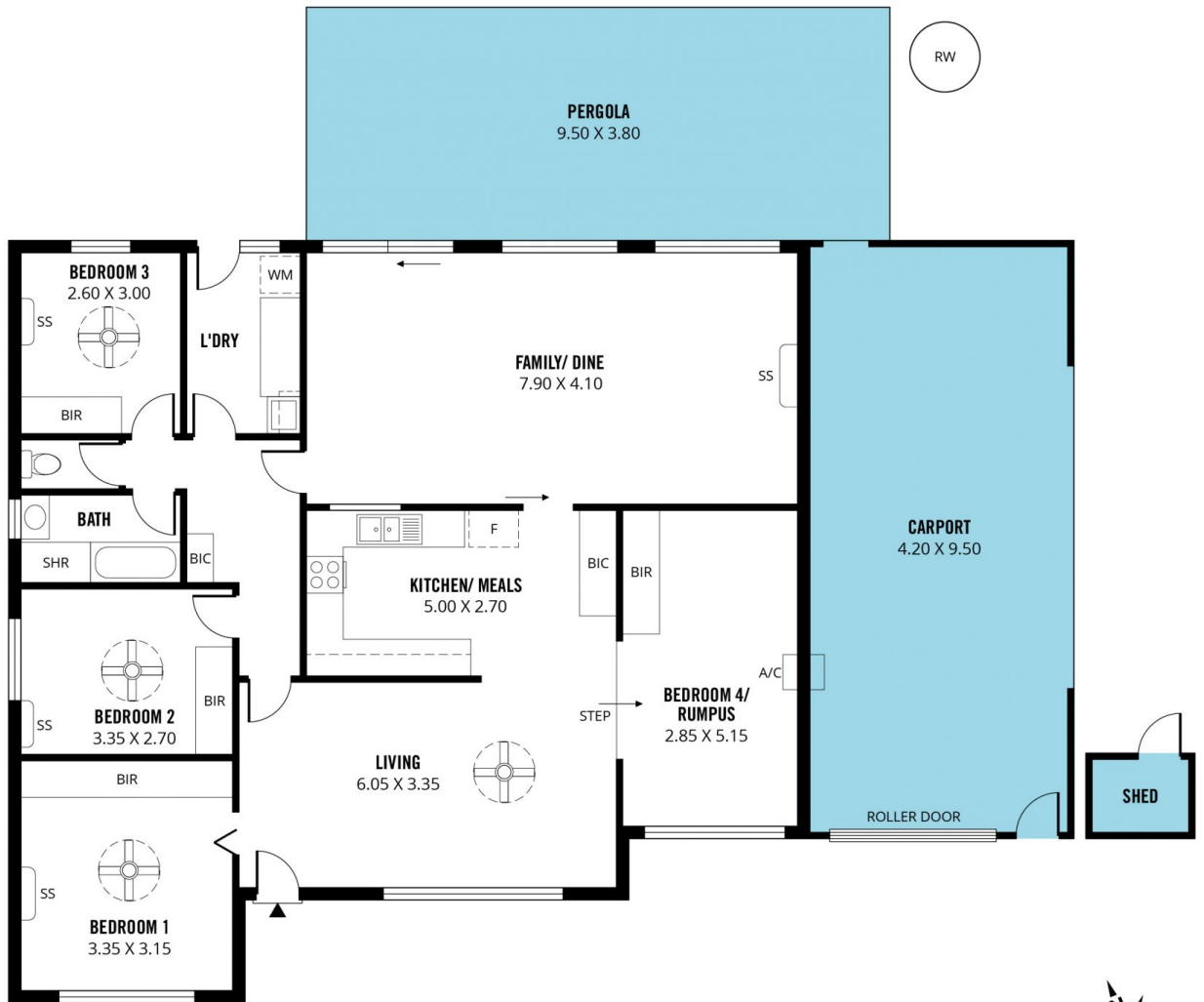
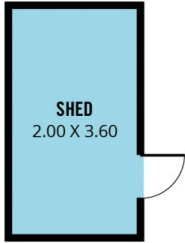
Located in the increasingly popular suburb of Christie Downs, this family home is sure to be snapped up quick! Christie Downs is an ultra convenient location; the Colonnades Shopping Centre is only a short drive and offers all you could need for your shopping needs. Public transport is so easily accessible with the train station within walking distance to take you to the CBD in no time. There are great schools to choose from including Woodcroft College and Prescott College and a variety of activities for the kids, including the newly built skate park across the road and the beautiful southern coastline only a 5 minute drive - there is so much to love about this location!

**Type** : House  
**Price** : \$ 545,000  
**Building Size** : 146 sqm  
**Land Size** : 709 sqm  
**View** : <https://www.magain.com.au/property/5-radcliffe-grove-christie-downs-sa/8427053>

[For full version visit the website](https://www.magain.com.au)

<https://www.magain.com.au>  
Magain Real Estate

52 Hillier Road Morphett Vale SA  
08 8366 2292



Scale in metres. This drawing is for illustration purposes only. All measurements are approximate and details intended to be relied upon should be independently verified.

Produced by **The Fotobase Group**